

HAIR SHAPING WITH SCISSORS

Scissor hair shaping may be done either on dry or wet hair.

Dry shaping. If the hair is shaped while dry, it usually is shampooed after the shaping is completed.

Wet shaping. The hair may be shaped immediately after it has been shampooed.

PREPARATION

1. Seat patron; adjust neck strip and plastic cape.
2. Examine head shape, facial features, and hair texture.
3. Comb and brush hair free of tangles.
4. Shaping may be done on dry or damp hair.

PROCEDURE

1. Divide hair into five sections.
2. Determine the length of the nape guideline hair.
3. Blunt cut guideline strand of nape hair. (Fig. 1)
 - a) Blunt cut strand on left side, using the earlobe as guide. (Fig. 2)
 - b) Blunt cut strand on right side to match left side. (Fig. 2)



Fig. 1. Blunt cutting strand at center nape to desired length.



Blunt cutting.

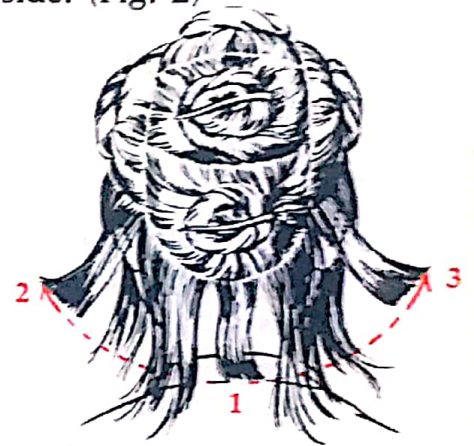


Fig. 2. Following up by cutting all remaining guideline hair.

- c) Blunt cut from back center to left front.
- d) Blunt cut from back center to right front. For completed guideline, see Fig. 3.

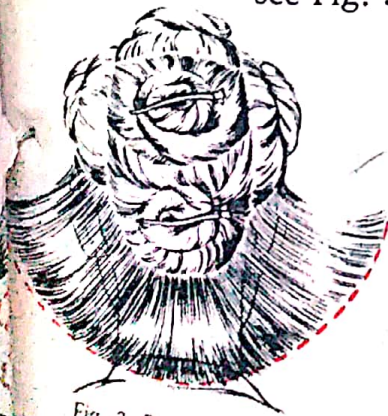


Fig. 3. Properly cut guideline hair.

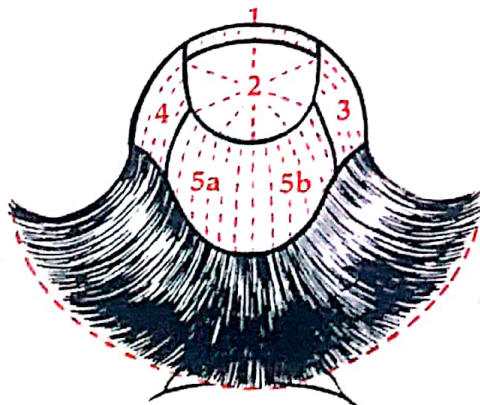


Fig. 4. Divide section No. 5 into two equal parts.

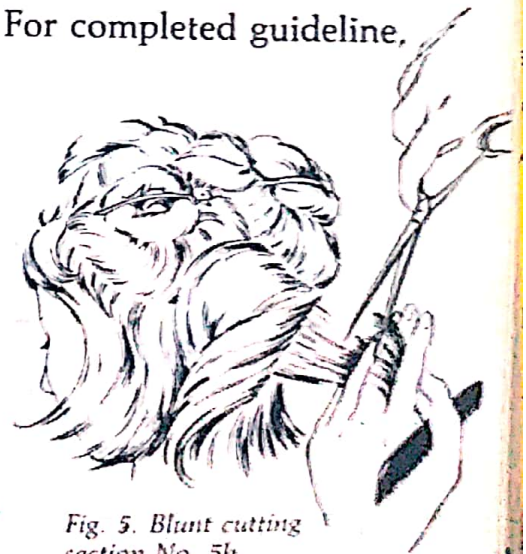


Fig. 5. Blunt cutting section No. 5b.

Let down section No. 5 and divide into two equal parts (No. 5a and No. 5b). Match length with guideline hair. Either left side or right side may be done first (Fig. 4). Hold hair panels out from the head while blunt cutting (Fig. 5). Continue cutting sections No. 3 and No. 4 in the same manner.

CROWN SECTION

Crown section No. 2. Hold pie-shaped strands out from the head; match length by picking up strands from section already cut. Continue around the head, matching length with sides and back hair. (Figs. 6 and 7)

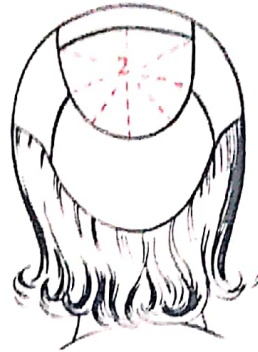


Fig. 6. Crown section.



Fig. 7. Shaping crown section.

TOP SECTION

Divide section No. 1 into two parts. Pick up hair from the middle of the section, using previously cut hair as a guide. Maintain the hand movement in a 45° (.785 rad.) arc. Proceed to cut both parts of section No. 1 in the prescribed manner. (Figs. 8 and 9)



Fig. 8. Top view.
Section No. 1 with
vertical partings.

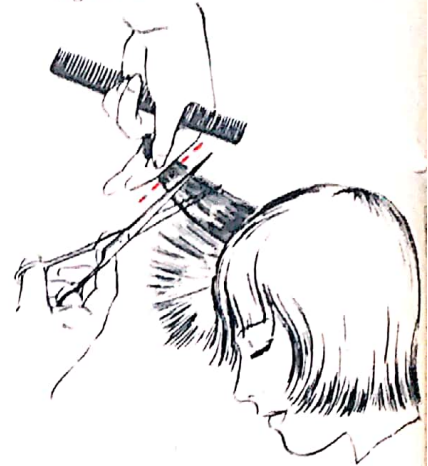


Fig. 9. Shaping top section.

If bangs are to be cut, move from side to directly in front of the patron for even cutting. Test hair for bounce (elasticity); then determine desired length. If bangs are to be short, use the bridge of the nose as a guide. If style is to be long, shape strands to blend into the length of the sides.

Reducing bulk. To complete shaping the hair, remove excess bulk by thinning with a razor, thinning shears, or scissors. It is recommended that all hair be checked for proper length.

COMPLETION

Remove neck strip and plastic cape. Thoroughly clean all hair clippings



Correct uniform shaping.



Completed shaping with bang
effect and/or off-face style.



Hair shaping for straight
back style.

from cape, patron's clothing, and from work area. You may then proceed with the next professional service desired by the patron.