

Hair Design

- 5 Elements of Hair Design
- 5 Principles of Hair Design
- Facial Shapes
- Hair designs for men



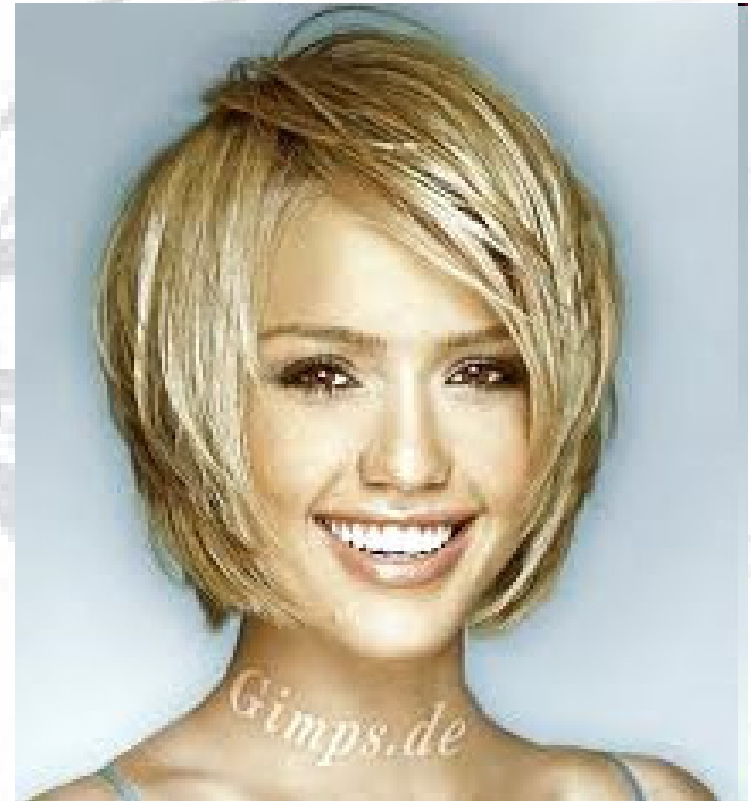
Elements of Hair Design

- To begin to understand the creative process involved in hairstyling, it is critical to learn the five basic elements of three dimensional design.
- These elements are:
line, form, space, texture and color.



Line

- Line defines form and space.
- Lines create shape, design, and movement of hairstyle.
- The eye follows the lines in a design.
- Can be straight or curved.

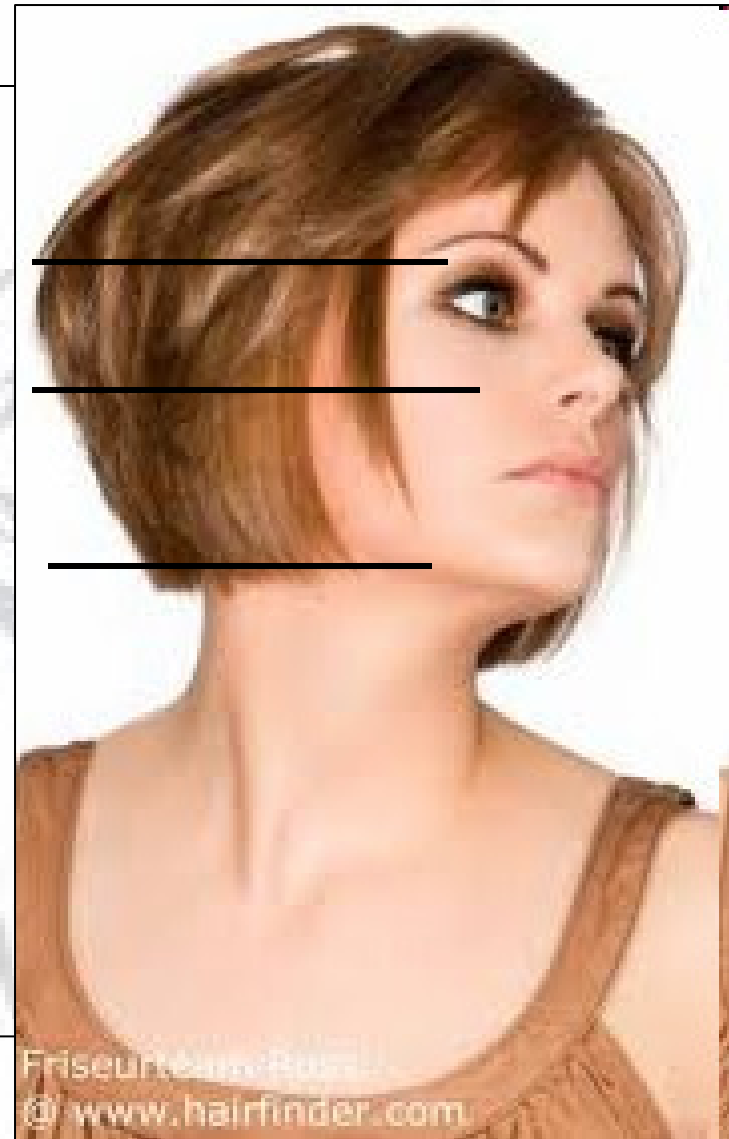




4 Basic Types of Lines

Horizontal Lines

- Create **width in hair design**
- Extend **in same direction**
- Maintain **constant distance apart** – from floor or horizon.



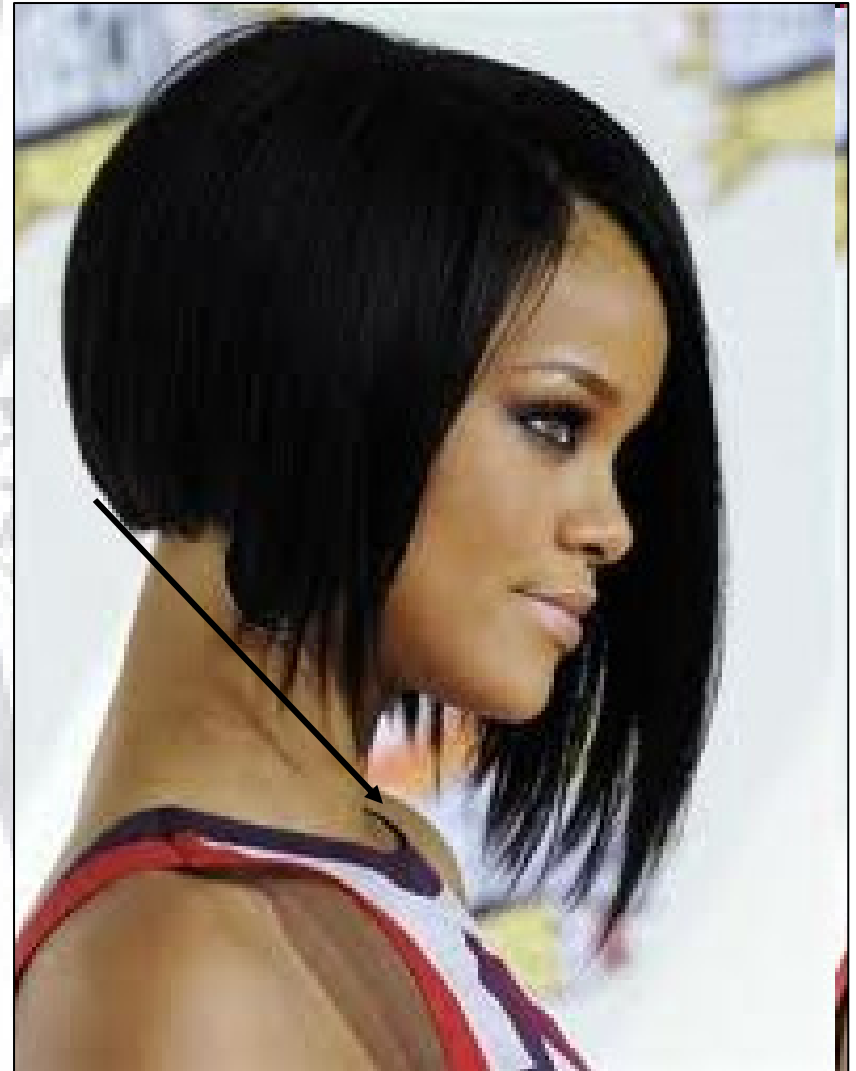
Vertical Lines

- Create **length and height** in hair design
- Make hairstyle **appear longer and narrower** as the eye follows the lines up and down.



Diagonal Lines

- Positioned **between horizontal and vertical lines.**
- Often used to **emphasize or minimize facial features.**
- Also used to **create interest** in hair design.



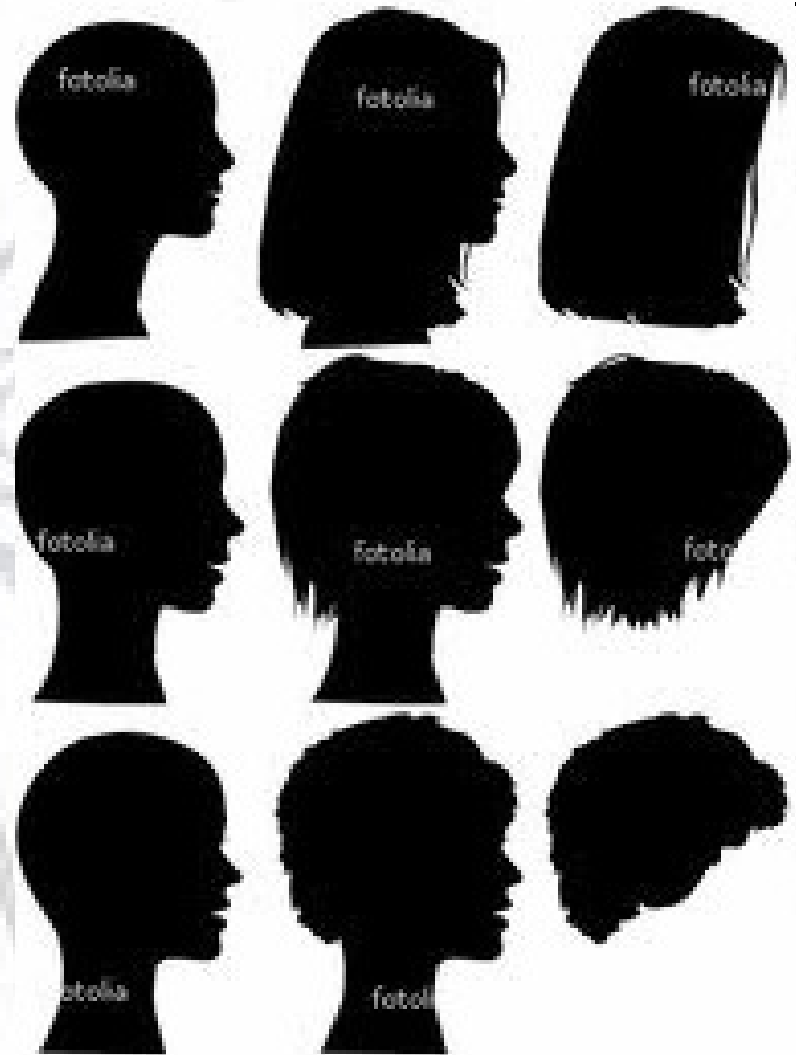
Curved Lines

- Soften a design
- Can be **large** or **small**, a **full circle**, or just part of a circle.
- Can be placed **horizontally, vertically, or diagonally**.
- Curved lines **repeating** in **opposite directions** create a **wave**.



Form

- The mass or general outline of a hairstyle.
- 3 dimensional
 - Has length, width and depth
- Silhouette of the hairstyle
 - Also called mass or volume.



Space

- The area surrounding the form or the area the hairstyle occupies.
- May contain curls, curves, waves, straight hair or any combination.

Straight



Wavy



Curly



Design Texture

- Refers to **wave patterns** that must be taken into consideration when designing a style.
- Wave patterns: **straight, wavy, curly, or extremely curly.**
- Ex. Straight hair **reflects light** better than other wave patterns.
- Ex. Wavy hair can be combed into **waves** that create **horizontal** line.
- Curly hair creates a **larger form** than straight hair.

Straight Hair Reflects Light



Curly Hair Takes Up
More Space



Color

- Can be used to make all or part of the design appear larger or smaller.
- Help define texture and line
- Ties design elements together.



Dimension with Color

- Light colors and warm colors create the **illusion of volume**.
- Dark and cool colors **recede** or **move** in toward the head, creating the illusion of **less volume**.
- Illusion of **depth** is created when **lighter or warmer colors** are alternated with those that are darker and cooler.


Dimensional Color



Lines with Color

- Use light color to draw a line in the hairstyle in the direction you want the eye to travel.





Elements of Hair Design Project

Principles of Hair Design

- **Five** important principles in art and design
 - Proportion
 - Balance
 - Rhythm
 - Emphasis
 - Harmony
- The better you understand these principles, the more confident you will feel about creating styles that are pleasing to the eye.

Proportion

- The **comparative relationship** of one thing to another.
- A well chosen hairstyle could **create the illusion of better proportion.**

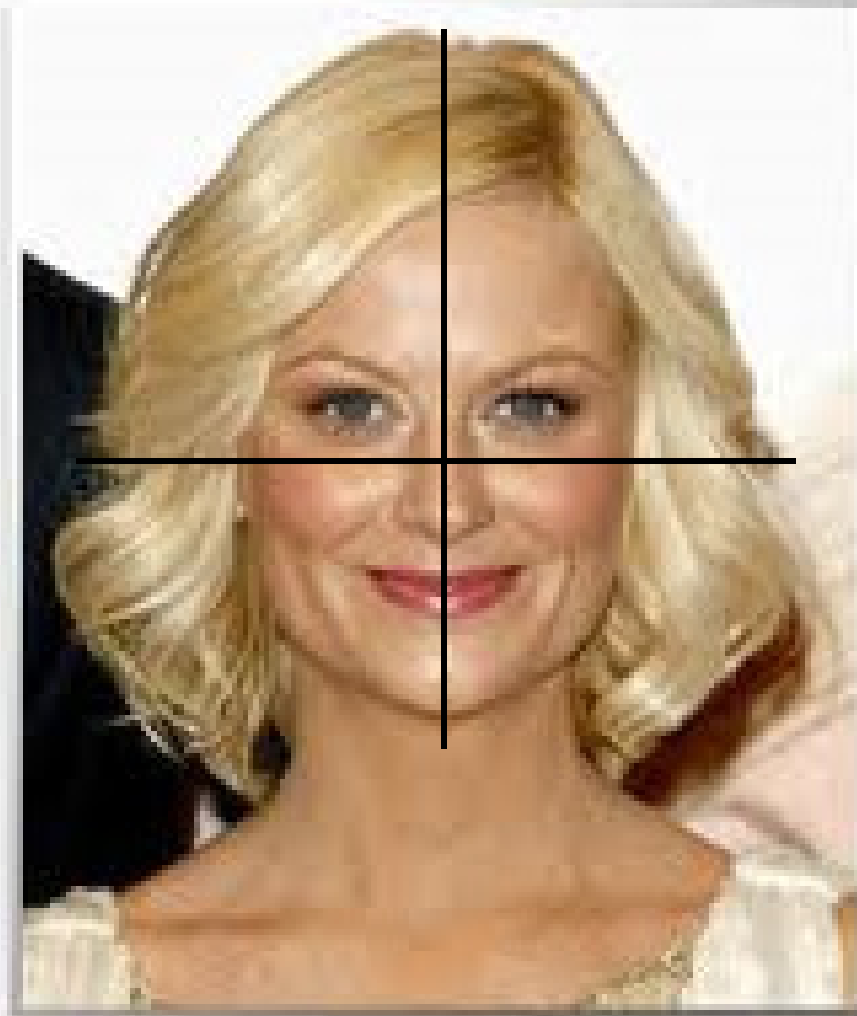
Body Proportion

- Essential to take the client's **body shape** and **size** into account.
- Ex. Large hips, broad shoulders – create style with more volume.
 - Same large hairstyle would look out of proportion on a petite woman.
- General Rule for “classic” proportion – **hair should not be wider than the center of the shoulders, regardless of the body structure.**

Balance

- Establishing **equal or appropriate proportions to create symmetry.**
 - Proportion of **height** to **width.**
- Can be **symmetrical** or **asymmetrical**
- To measure symmetry
 - Divide the face into **four equal parts.**
 - Lines cross at the **central axis.**
 - The reference point for judging the balance of the hair design.

Well Balanced Haircut

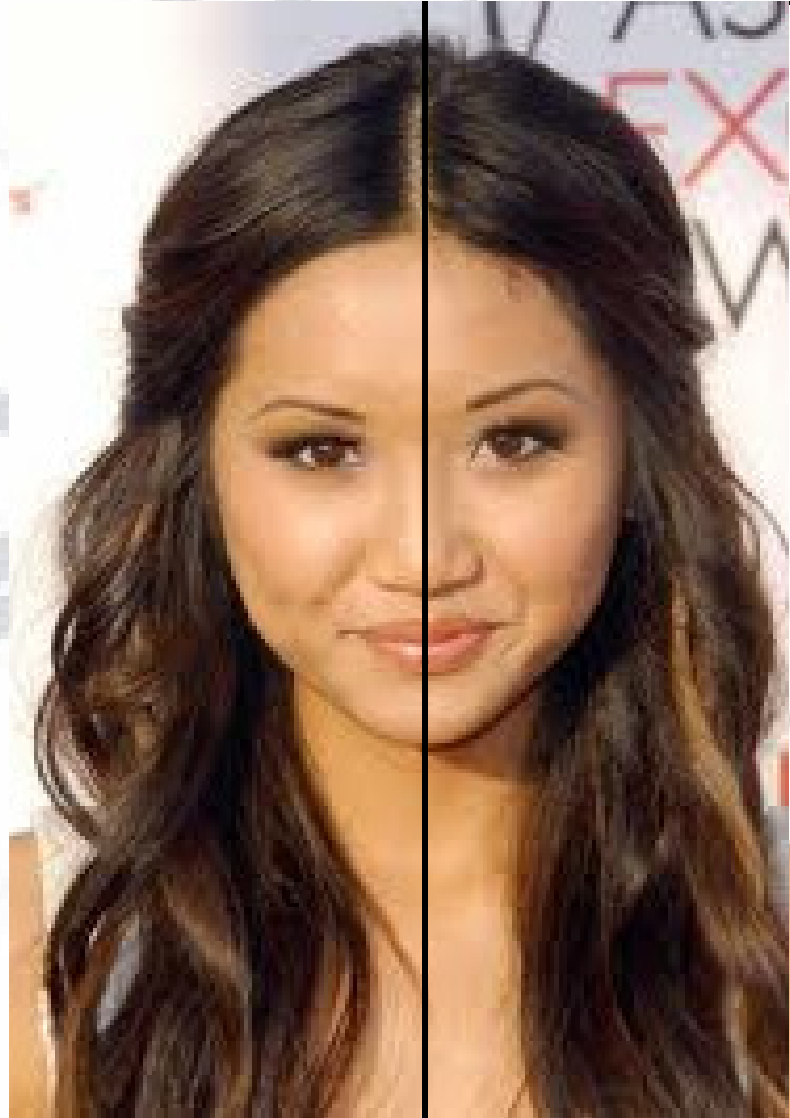


AMY POEHLER

Symmetrical Balance

- Occurs when an imaginary line draws through the center of the face and **two resulting halves form a mirror image of one another.**
- Both sides of the hairstyle are the same **distance** from the **center**, the same **length**, and have the same **volume** when viewed from the front.

Symmetrical Balance



Asymmetrical Balance

- Opposite sides of the hairstyle **are different lengths or have a different volume.**
- Can be **horizontal** or **diagonal.**



Rhythm

- Regular **pulsation** or recurrent pattern of movement in a design.
 - **Fast** rhythm – **tight curls**
 - **Slow** rhythm – **larger shapings or long waves**

Fast Rhythm



Slow Rhythm



Emphasis

- Draws the **eye first** before traveling to the rest of the design.
- Create interest with an **area of focus** or **emphasis** by using the following:
 - Wave pattern
 - Color
 - Change in form
 - Ornamentation

Emphasis Using Wave Patterns



Emphasis Using Color



Emphasis Using Form



Emphasis Using Ornamentation



Harmony

- Creation of unity in a design and is the most important of the art principles.
- Holds elements of the design together.
- When hairstyle is harmonious it has:
 - Form with interesting lines
 - Pleasing color or combinations of colors and textures
 - Balance and rhythm that together strengthen the design



Principles of Hair Design Project

Facial Shapes

- Facial shape is determined by the **position and prominence of the facial bones.**
- 7 Basic facial shapes
 - Oval
 - Round
 - Square
 - Triangle (pear shaped)
 - Oblong
 - Diamond
 - Inverted Triangle (Heart shaped)

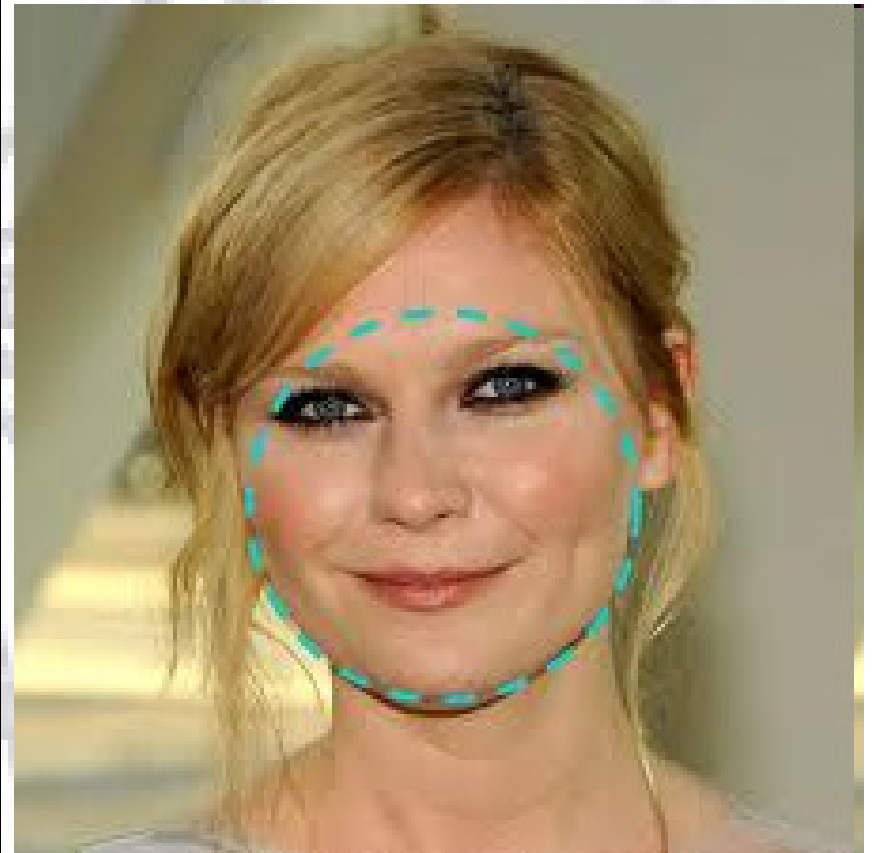
Oval

- Ideal face shape
- Can wear any hairstyle
 - Unless there are other considerations, such as eyeglasses, nose length or shape, or profile.



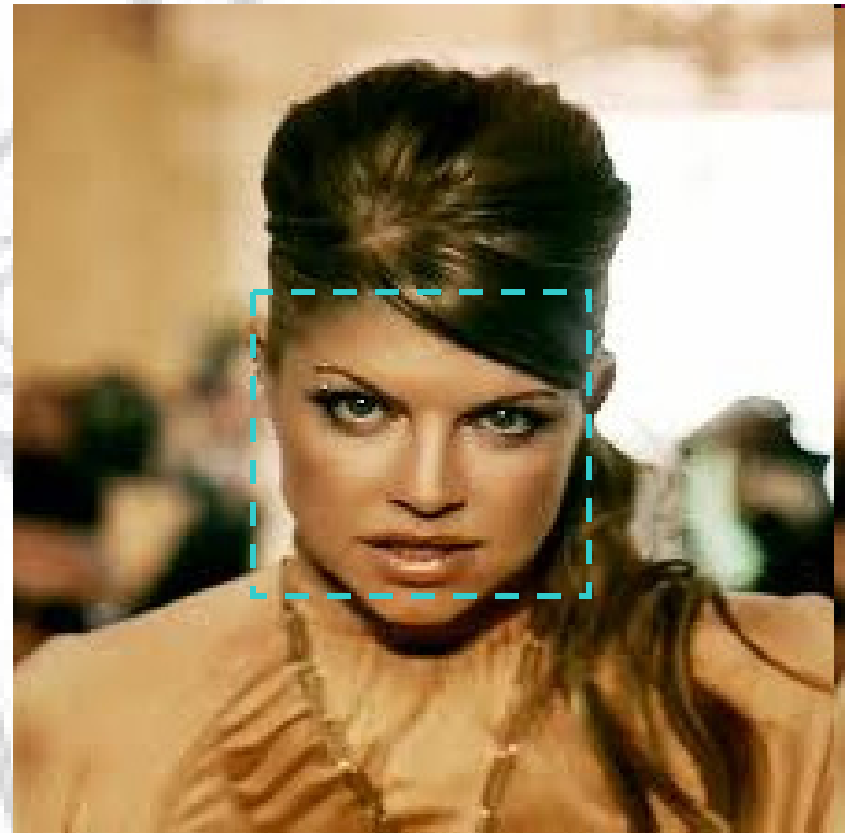
Round

- Round **hairline** and **round chin line**; wide face.
- Aim: To create the **illusion of length to the face**.
- Style Choice: Hairstyle with **height** or **volume** on **top** and closeness or no volume at the sides.



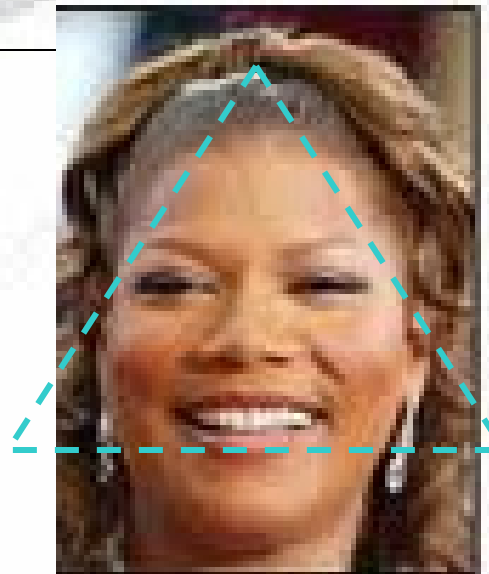
Square

- Wide at the temples, narrow at the middle third of face and squared off at the jaw.
- Aim: Offset or round out the square features.
- Style Choice: Soften hair around temples and jaw bringing shape close to the head form.



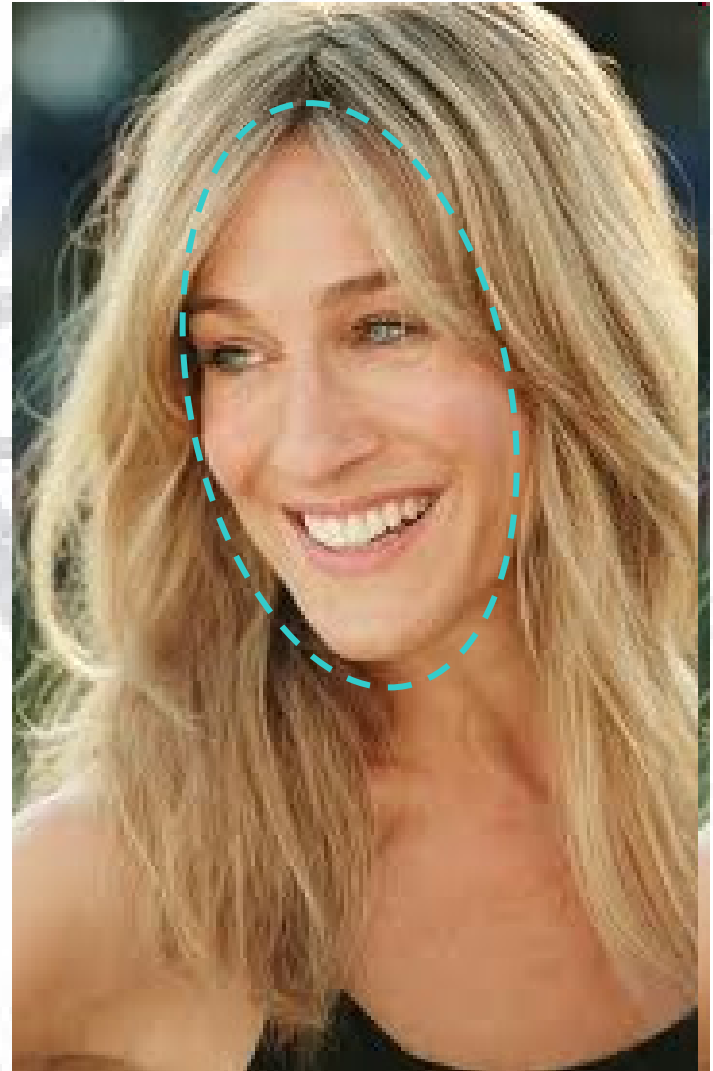
Triangular (Pear Shaped)

- Narrow **forehead**, **wide jaw and chin line**.
- Aim: Create the illusion of **width in the forehead**.
- Style Choice: **Volume** at **temples** and some **height** at the **top**. Disguise the narrowness of forehead with a soft bang or fringe.



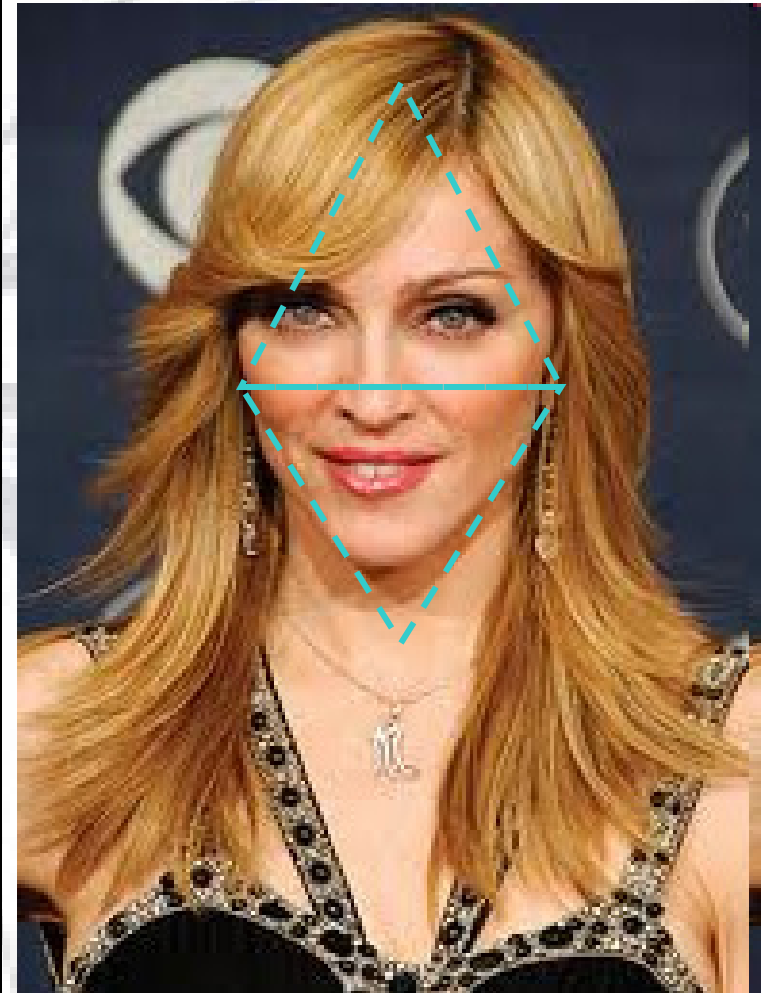
Oblong

- Long, **narrow face with hollow cheeks.**
- Aim: Make the face appear **shorter and wider.**
- Style Choices: Keep hair **close** to the **top** of head. Add **volume** on **sides** to create illusion of width. Hair should not be too long.



Diamond

- **Narrow forehead, extreme width through the cheekbones, and narrow chin.**
- **Aim: To reduce the width across the cheekbone line.**
- **Styling Choice: Increase fullness across jaw line and forehead, keep close at cheekbone line to help create oval appearance.**



Inverted Triangle (Heart Shaped)

- Wide forehead and narrow chin line.
- Aim: Decrease the width of forehead and increase the width in the lower part of the face.
- Style Choice: Style close to head with no volume. Bang recommended. Gradually increase the width in cheekbone area and near ears.

