

# EVELINE

A STORY ABOUT A FAILED QUEST

# ABOUT THE AUTHOR

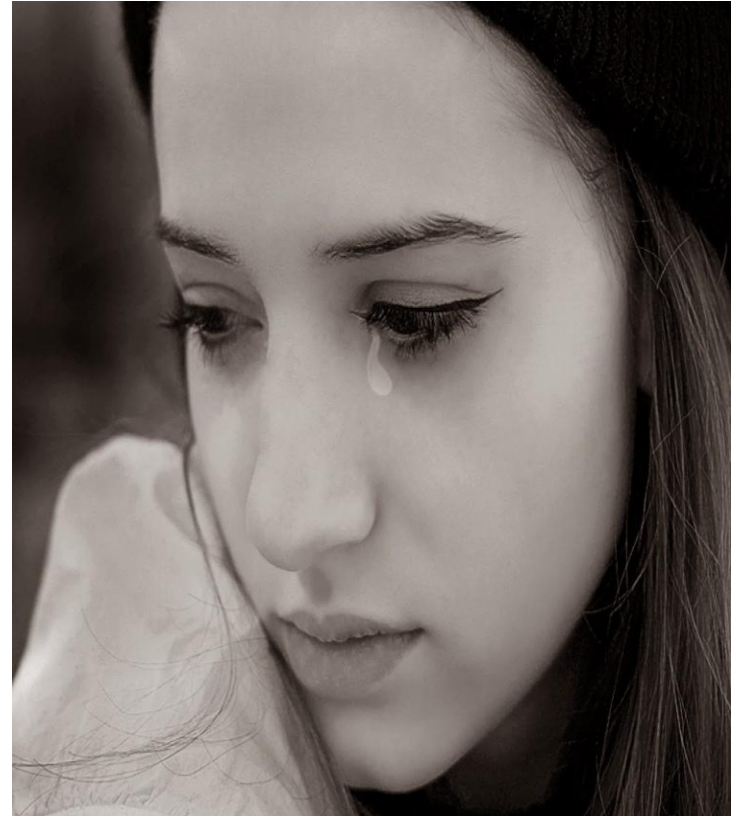


- ◉ James Joyce was born in Dublin , Ireland HE was educated at Jesuit School and university college , Dublin . Then he went to Paris to pursue a career in writing .He wrote three novels, portrait of the artist as a young man , Ulysses , Finnegan’s wake , a book of poem; Chamber music , a play ‘Exiles’ and a book of short stories ‘Dubliners ‘. He was a master of style .He wrote in a style meant to subliminally sensitize the reader to the modern day urban paralysis he was depicting .

- ◉ One of the most special thing about Joyce is how he brings together the real and the mythical. His books are highly detailed descriptions of the events of everyday life but at the same time there is also a mythic , cosmic backdrop to everything brought about by the heavy use of symbolism .
- ◉ Though short and easy to read ‘Eveline’ is devastating , possibly the most powerful story in the book . It is yet another Dubliner’s tale about paralysis

# EVELINE THEMES :- “PARALYSIS”

- **Paralysis** :- “ She set her white face to him , passive like a helpless animal , her eyes gave him no sign of love or farewell or recognition”.
- In most of the stories of Dubliners, a character has a desire , faces obstacles to it, then ultimately relents and suddenly stops all action . These moments of paralysis show characters inability to change their lives and reverse the routine that hamper their wishes .



- ◉ **Eveline** appears throughout the story literally paralysed , in a static position either sitting down or standing but not moving he does not move metaphorically either , She seems to be stuck in life, unable to move forward and she's also linguistically paralysed since she is unable to express her thoughts and feelings



# DOMESTIC OPPRESSION :



- ◉ Domestic violence causes oppression too because eveline is torn between escaping the abuse of her father and her worry about her brother's state if she leaves. The fear of the unknown also grips her.

# SOCIAL SUBJUGATION

- ◉ She doesn't feel respected in Dublin, bullied by a colleague at her job, she thinks marriage is the only way for a female to become respected in society





# A CIRCULAR JOURNEY :

- ◉ Eveline feature a circular journey where a character decides to go back to where their journey began and where the result of their journey is disappointment and reluctance to travel
- ◉ Evelin seems to be a story about individual's moral and psychological paralysis as a result of one's upbringing in a given social conditions.

