

## Drop Shoulder

The drop shoulder pattern is developed by attaching a portion of the upper sleeve cap to the bodice. The dropped shoulder extends beyond the shoulder tip and covers part of the upper arm at varying lengths. It may be developed without the lower sleeve (Design 1) or with the lower sleeve (Design 2). Instructions apply to dresses, blouses, jackets, coats, activewear, evening dresses, and so on. Design your own variations showing the creative flexibility of the drop shoulder pattern. See pages 378 and 380.

### Drop Shoulder Draft

#### Pattern Plot and Manipulation

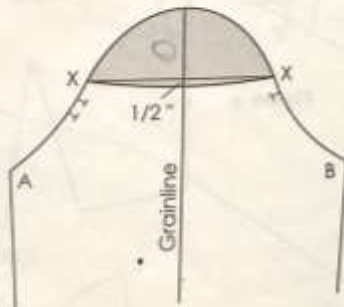
Figure 1

#### Sleeve preparation

- Mark the center between the cap and biceps.
- Square a line across the sleeve cap from this mark.
- Mark 1/2 inch down from center, and draw a curved styleline. Label X.
- Measure armhole curves A to X and B to X. Record.

Separate cap from lower sleeve (shaded area). Cut through grainline to separate the cap.

Figure 1



DESIGN 1



DESIGN 2

Figure 2

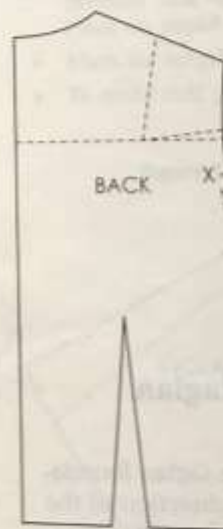
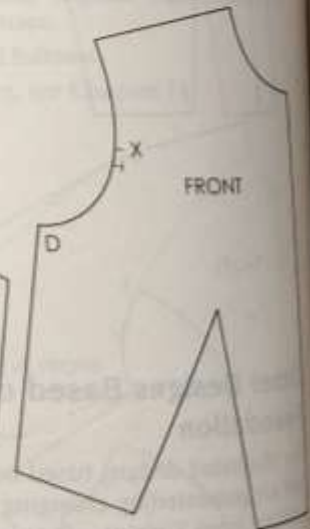


Figure 3



Figures 2 and 3

Trace patterns, allowing room for the cap.

- Trace back bodice, transferring shoulder dart to armhole. Trace front bodice.

C to X = A to X

D to X = B to X

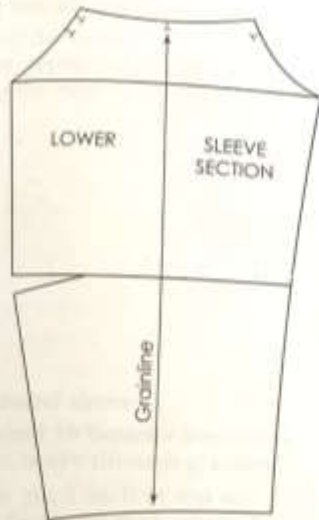
**Figures 4 and 5 Sleeve cap to bodice**

Place cap sections on front and back bodice with X-points touching and curve of cap 1/4 inch away from shoulder tips.

- Mark 1/4 inch up from shoulder tips and draw blending curve over cap, ending at mid-shoulder as shown. When trueing, blend curve of the shoulders.

Figure 6 Lower sleeve section

Figure 6



**Figure 7 Casual drop shoulder**

For Design 2, use bottom of sleeve section.

Note: For a more casual fit, add 1/2 inch to the width of the cap. Split sleeve along grainline and spread 1 inch to zero at hem, or parallel for looser sleeve. True to cap. For a more exaggerated sleeve, add more to the cap and spread lower sleeve by equal amounts. (See page 378.)

Figure 7

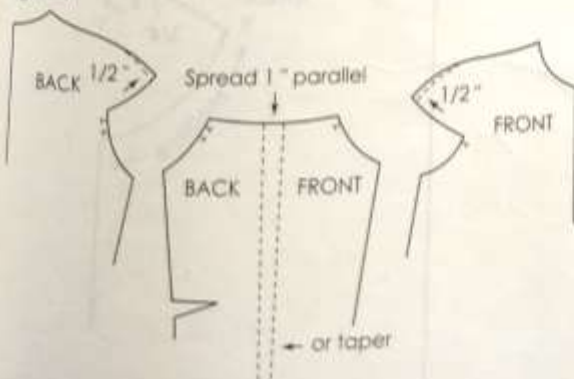


Figure 4

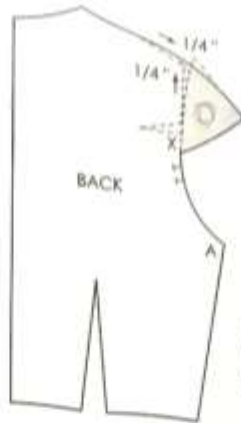
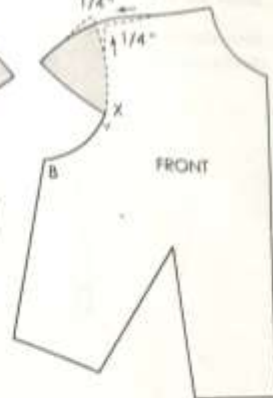


Figure 5



How pattern will look for designs not using lower sleeve pattern, Design 1.

**Figure 8 Notching an inverse corner**

- After seams are added, draw a line through the corners of stitch line and seamline. Follow illustration as guide to mark, cut, and notch pattern.

Figure 8

