

CHILD BODICE BLOCK

Age -2 years

Height-92 cms [36 ¼"]

Measurements

Length of bodice block -2/8 of height -23 cms [9"]

Size of paper

Length = Length of bodice block

Width = ½ round chest + 2.5 cms [1"] ease

Method

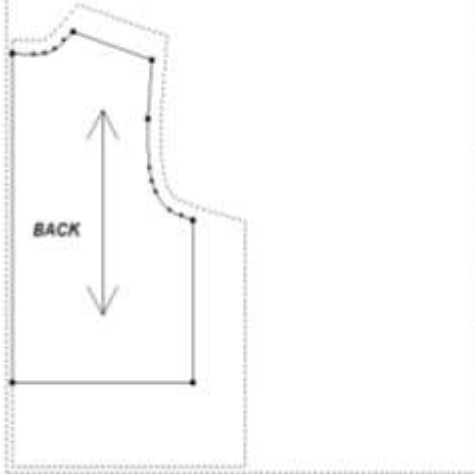
Construction Lines

- Take the given size of paper
- Mark the corners ABCD
- Divide AC into ½ mark the line EE'
- Divide AE into ½ mark the line FF'
- Divide AF into ½ mark the line GG'
- Divide AG into ½ mark the line HH'
- Divide AB into 6 equal parts mark the line 1,2,3,4,5,

Back

- join H, with a slight downward curve for back neckline
- where line 2 and line HH' intersect is a point called I
- join I and 1 and extend it by 2.5 cms [1"] to J
- where line 2 and FF' intersect is a point called K
- point L is 2 cms [¾"] on the right side of K
- where line EE' and line 3 intersect is a point called M

CHILD'S BACK BODICE BLOCK



CHILD FRONT BODICE BLOCK

