

Lantern Sleeve

Lantern Sleeves

Design Analysis

A lantern sleeve is a two-section sleeve that flares out from the cap (upper section) and hemline to a styleline within the sleeve. The sleeve can be developed at varying lengths and fullness. The three designs show the flexibility of the lantern sleeve silhouette. Design 3 is given as a practice problem. Adjust armhole; see page 324.



DESIGN 1

DESIGN 2

DESIGN 3

Long Lantern Sleeve—Design 1

Measurement needed:

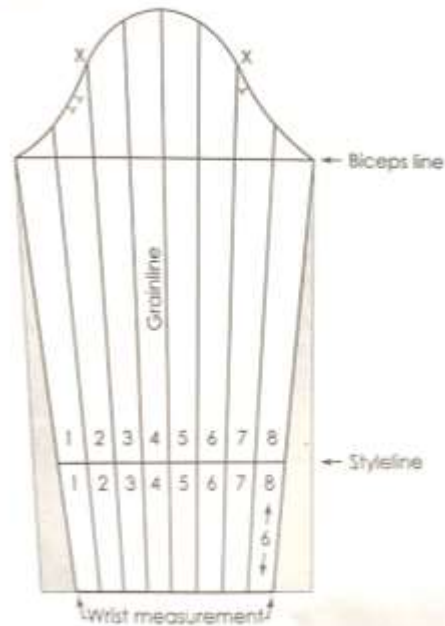
- Around hand _____. (See page 318.)

Pattern Plot and Manipulation

Figure 1

- Trace dartless sleeve pattern and all markings.
- Label quarter sections X.
- Mark one-half of the around-hand measurement, less 1/2 inch from each side of grain at hemline.
- Draw lines from wrist marks to biceps.
- Draw styleline 6 inches up from hem (varies).
- Divide sleeve into eight parts and number.
- Cut and discard unneeded sections (shaded area).

Figure 1



Figures 2 and 3

- Cut and separate upper from lower section.

Figure 2



Figure 3



Figure 4 Upper sleeve

- Cut slash line to, not through, cap.
- Place on paper and spread desired amount, secure, and trace.
- Measure down 1 inch from the bottom panel.
- Blend curved line to underseams.
- Notch centerline of sleeve.
- Cut from paper.

Figure 4

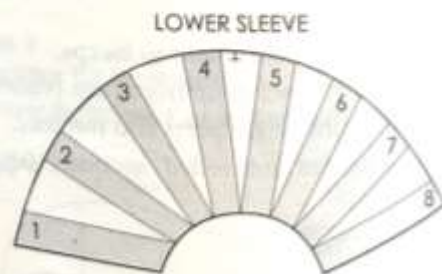


Figure 5 Lower sleeve

- Develop lower section, spreading same amount as upper sleeve.

Note: Lantern styleline must measure equally to true to upper section.

Figure 5



Short Lantern Sleeve—Design 2

Pattern Plot and Manipulation

Figure 1

- Trace back half of dartless pattern to 5 inches below biceps. Include front underarm curve.
- Draw line from biceps, ending 1/2 inch in from hemline. (Broken line indicates original underseam.)
- Draw lantern styleline, dividing upper and lower sections equally.
- Draw slash lines and label.
- To adjust armhole; see page 324.

Figure 1

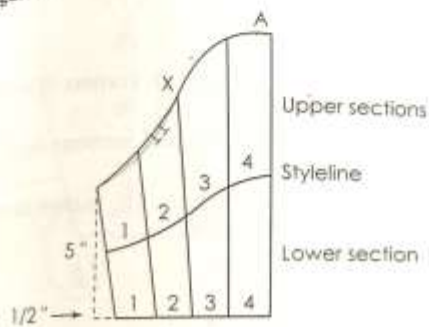


Figure 4

- Cut slash lines to, not through, cap and hem of both sections.
- Place sleeve on fold of paper (point A of upper section touches fold line).
- Spread upper and lower sections. (Example: 1 1/2 inches; 3/4 inch each side of center line.)
- Trace patterns and front underarm curve.
- Extend centerline of sleeve sections 1 inch at styleline, blending curved line. (Upper and lower stylelines must measure the same.)
- Notch where shown and cut from paper. Unfold and trim front underarm curve (shaded area).

Figures 2 and 3

- Cut sleeve from paper.
- Cut and separate upper from lower section.

Figure 2

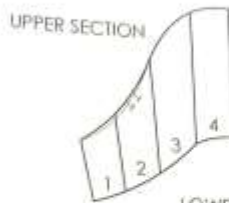


Figure 3

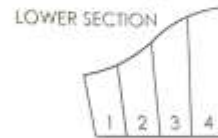


Figure 4

