

COLLARS (3 of 4)

www.infovisual.info



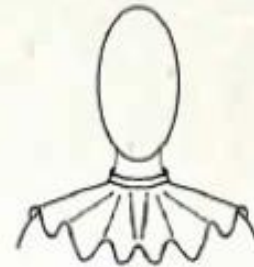
Peter Pan collar



removable Peter Pan collar



bow neck



collaret



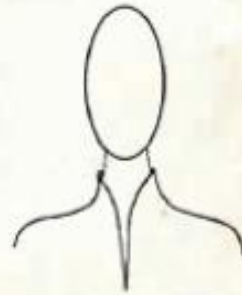
Bertha collar



cape collar



square collar



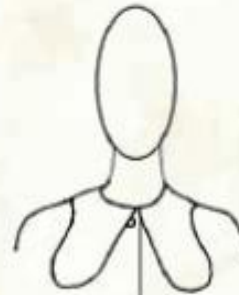
swan-necked



lapel collar



poet collar



dog ear collar

Collars (3 of 4): part of the blouse that surrounds the neck.

Peter Pan collar: flat collar with round points.

Removable Peter Pan collar: removable flat collar with round points.

Bow neck: large points collar provided with ribbons.

Collaret: collar provided with pleats or puckers.

Bertha collar: big round collar covering the shoulders.

Cape collar: collar provided with large points.

Neckline Types



Round Neck



Crew Neck



High Neck



Turtle Neck



U-neck



Square Neck



Strapless
Sweetheart



Spagetti Strap



Halter



Sweetheart



V-neck



Plunging
Neckline



Cowl



Halter Strap



Jewel Neckline



Boat neckline



Off-shoulder



One Shoulder