



SEAM ALLOWANCE

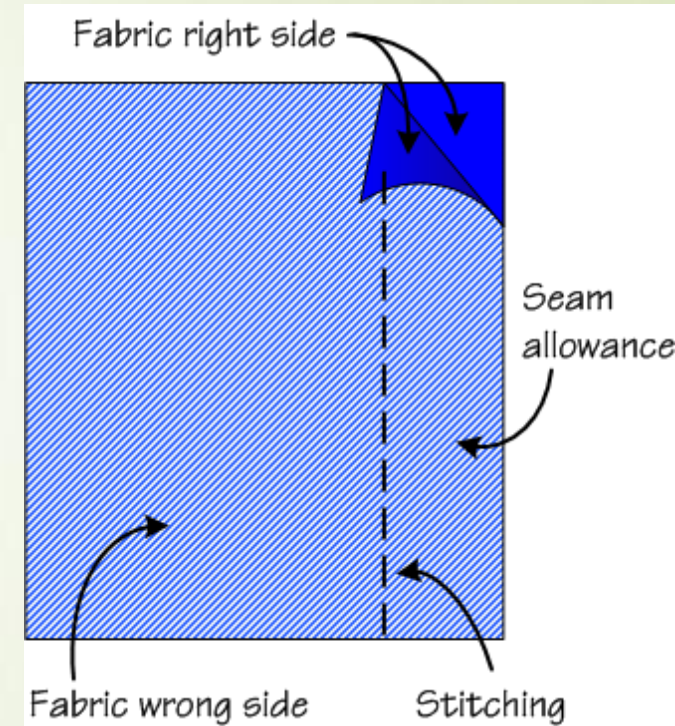
For B.sc sem. IV

Subject-Garment Construction and Draping

From Miss. Harpreet Kaur
Asst. Prof. in Fashion Designing

Introduction Of Seam Allowance

- Seam allowance (sometimes called inlays) is the area between the fabric edge and the stitching line on two (or more) pieces of material being sewn together. Seam allowances can range from 1/4 inch (6.4 mm) wide to as much as several inches. Commercial patterns for home sewers have seam allowances ranging from 1/4 to 5/8 inch (6.4 to 15.9 mm).
- Sewing industry seam allowances range from 1/4 inch (6.4 mm) for curved areas (e.g. neck line, armcye) or hidden seams (e.g. facing seams), to 1 inch (25 mm) or more for areas that require extra fabric for final fitting to the wearer (e.g. center back). Curved seams generally have a smaller seam allowance than straight seams; bulky seams with a large amount of seam allowance are more difficult to press into or conform to a curved shape.



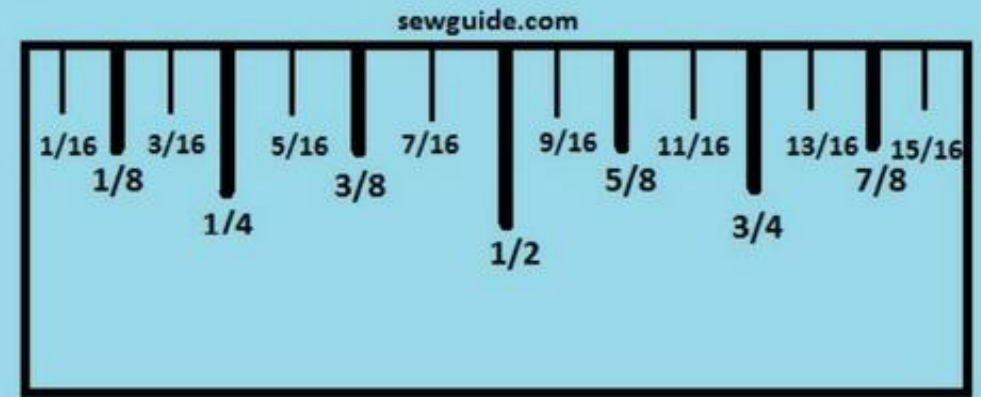
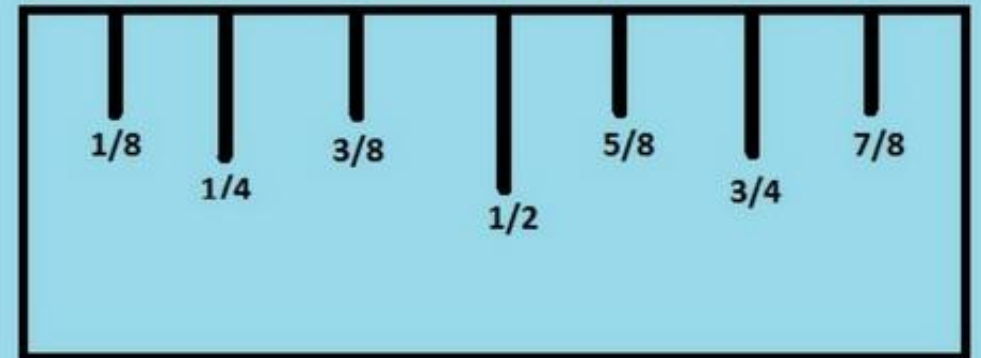


How to

read a sewing TAPE MEASURE

- ▶ The measurements are given as 1/8th of an inch i.e. one inch is divided into 8 parts. Sometimes measurement markings representing 1/16th of an inch are also given. Tape measures and rulers used in construction and design works usually have markings with 1/32 of an inch.
- ▶ The main middle marking inside the inch represent 1/2 inch (Half inch)
- ▶ The next small markings represent 1/4 of an inch (Quarter inch) & 3/4 of an inch (three fourth inch)
- ▶ The next small markings represent 1/8, 3/8, 5/8 and 7/8 of an inch (eighth's of an inch)

What to find inside an inch



Inch to millimeter conversion Reference

List. 12 inches make a foot. One inch is equal to 2.5 cms or 25 mms.

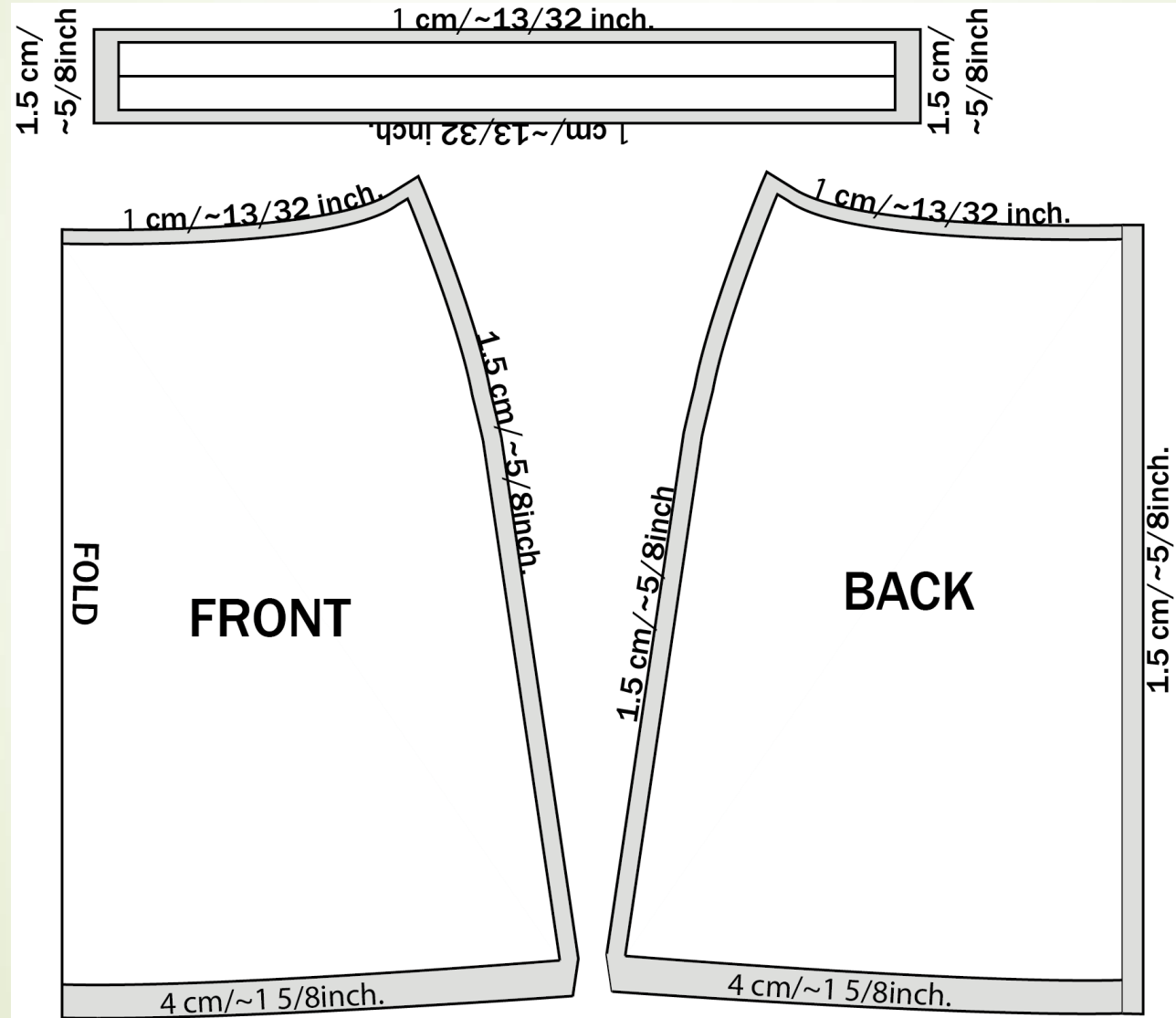
Choose the right one for you and this will decide on the correct seam allowance you should be using.

For eg. a french seam will call for a different seam allowance than a butt seam.

In garments, I usually leave a seam allowance of 1/2 inch for straight seams and 1/4 inch for curves, like armholes and collars. In commercial patterns, the given seam allowance is usually 5/8 inch. This is one mark more than 1/2 inch on the tape measure .









Inch	Inch	milli meters
1/4	.25	6.35
1/2	.50	12.7
3/4	.75	19.05
1/8	.125	3.17
3/8	.375	9.52
5/8	.625	15.87
7/8	.875	22.22
1/16	.06	1.5
3/16	.18	4.76
5/16	.31	7.93
7/16	.43	11.11
9/16	.56	14.28
11/16	.68	17.46
13/16	.81	20.24
15/16	.93	23.81

A-LINE SKIRT SEAM ALLOWANCE



CIRCULAR SKIRT SEAM ALLOWANCE

TABLE OF CIRCLE SKIRT DIMENSIONS

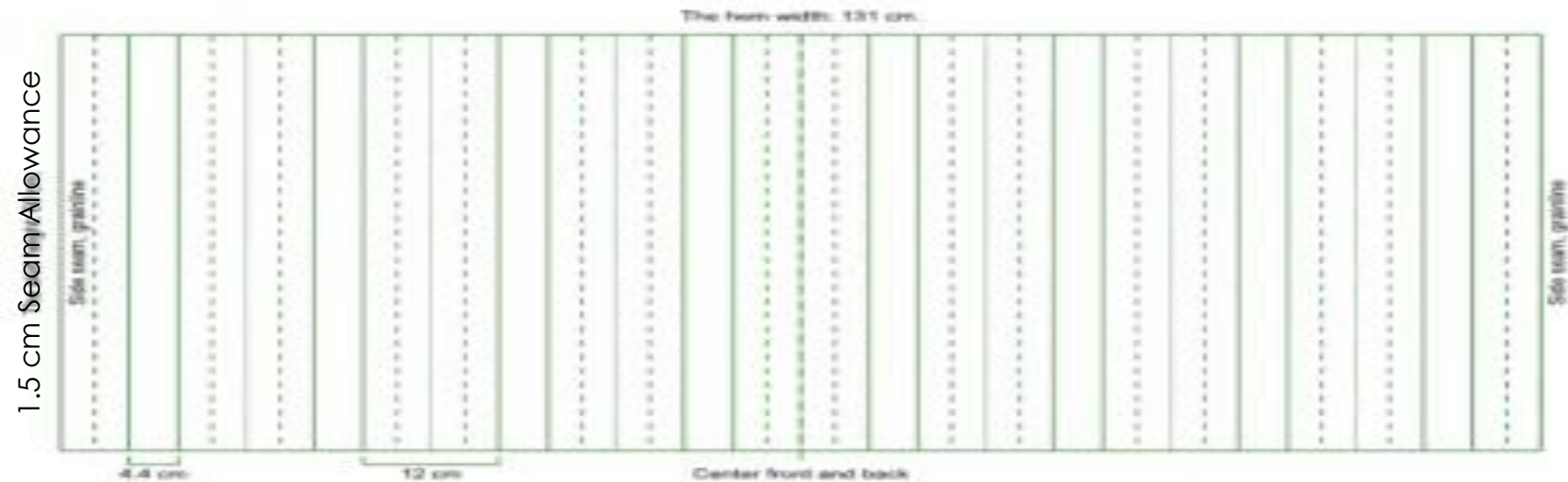
Type of circle skirt	Circle Skirt Shape	Formula	Folding Fabric
Full circle skirt		$r = c / (2\pi) = _ _$ minus the seam allowance (1cm)	fold 
$\frac{3}{4}$ circle skirt		$r = (1.33 \times c) / (2\pi) = _ _$ minus the seam allowance (1cm)	fold  then cut 1/4 of the circle off OR Draw the $\frac{3}{4}$ circle on paper, fold in half.
$\frac{1}{2}$ circle skirt		$r = (2 \times c) / (2\pi) = _ _$ minus the seam allowance (1cm)	fold 
$\frac{1}{4}$ circle skirt		$r = (4 \times c) / (2\pi) = _ _$ minus the seam allowance (1cm)	 no fold required.

PLEATED SKIRT SEAM ALLOWANCE

The pleated skirt consists of simple rectangles. A zipper is inserted into the left side seam. If you want the zipper to start below the waistband and if you want to add a buttoning extension, add about 4 cm (1.5") extra length to the waistband.

The patterns don't include the seam allowances, so add 1.5 cm (5/8") to the edges excluding the bottom hem, to which you want to add as much as you need for the hemming. (I suggest adding at least 4 cm (1.5").)

THE HEM (THE FRONT AND BACK USE THE SAME PATTERN.):

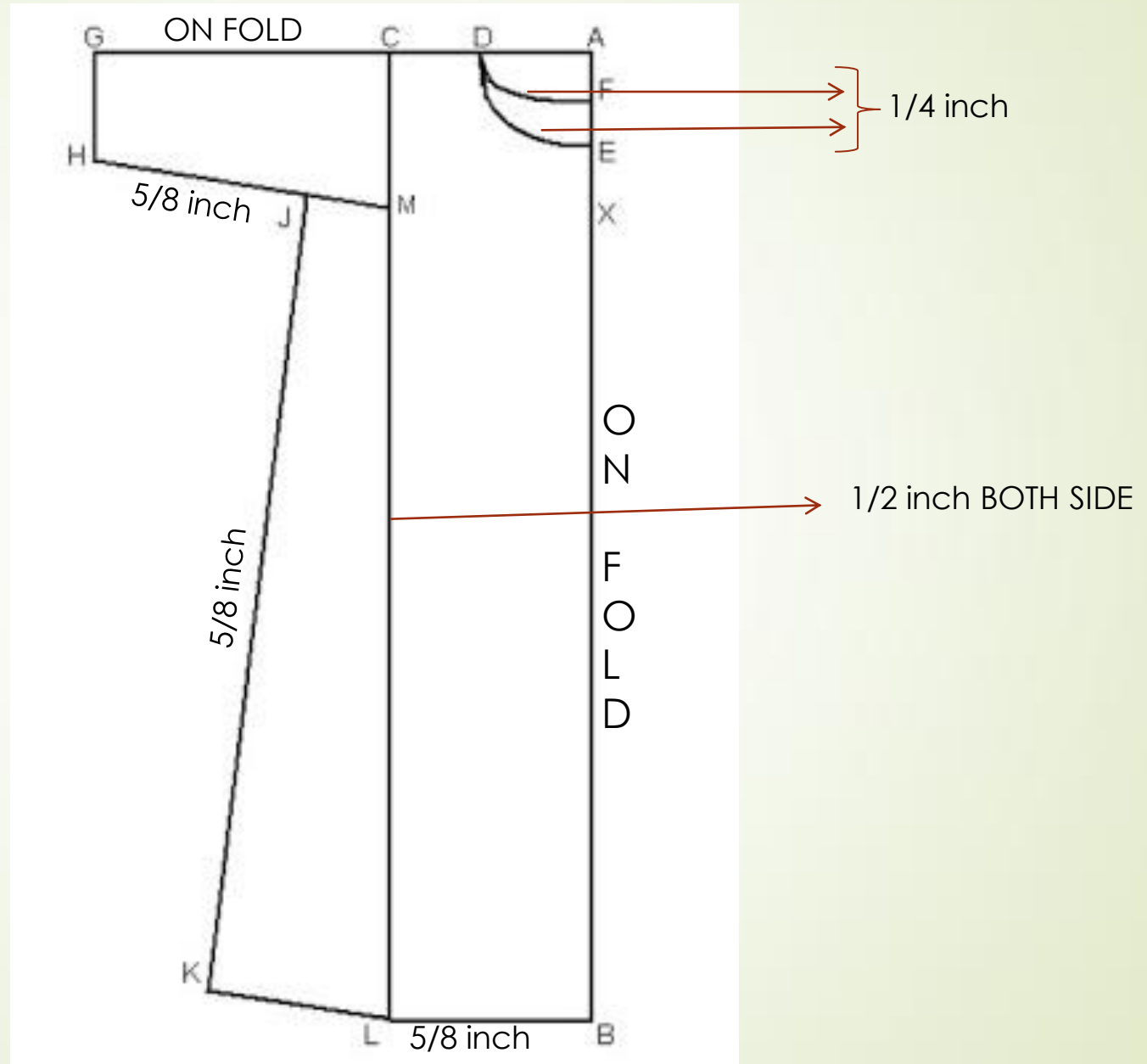


THE WAISTBAND (1 KPL):

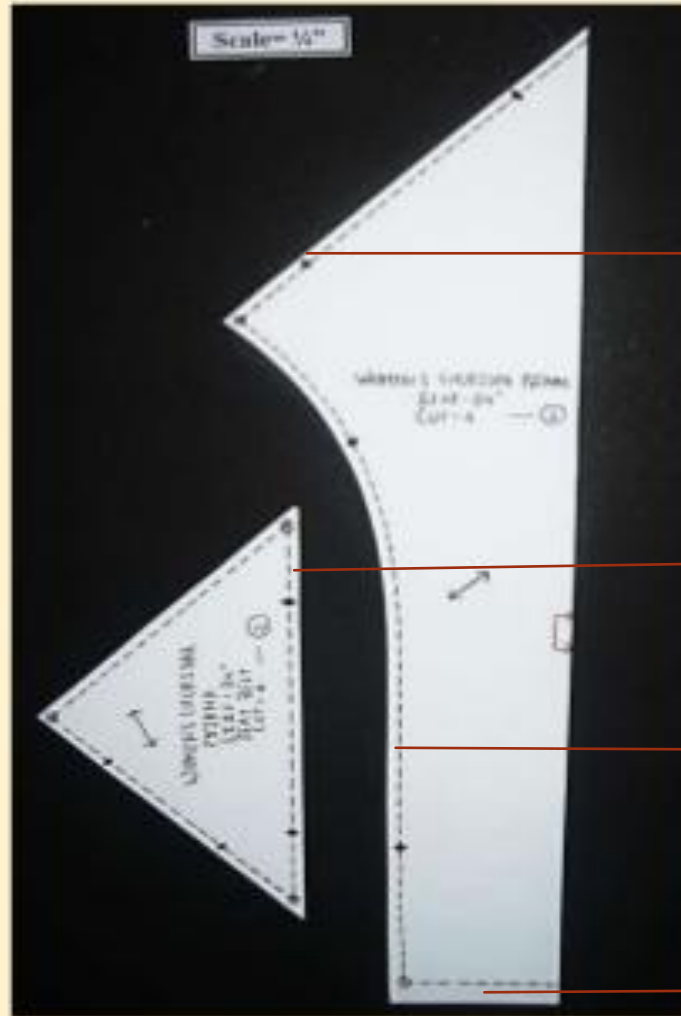
The waistband doesn't include the buttoning extension or seam allowances.



KALIDAR KURTA SEAM ALLOWANCE



CHURIDAR PAJAME SEAM ALLOWANCE



→ 1/2 inch

→ 1/2 inch

→ 1/2 inch

→ 5/8 inch





THANK YOU