

# YOKE SKIRT MADE FROM BASIC A LINE SKIRT

---

Trace out the basic a line skirt

Mark the shape of the yoke

Separate the yoke and the lower portion of skirt

Take a big sheet of brown paper and place the lower skirt portion so that top of the drafting touches top of the brown paper and center front or center back touches the side of brown paper

Trace out the drafting

Place the drafting again so that top of the drafting touches top of the brown paper and center front or center back touches the side seam of first trace out drafting

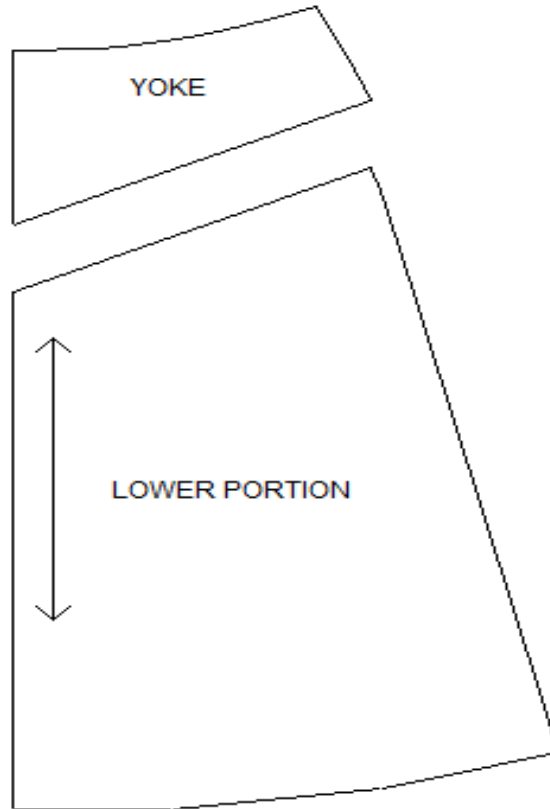
For pleated skirt trace out the drafting thrice .

Reshape the top edge as shown in the diagram

Draw a grainline and write down the measurements to

Complete the drafting .

YOKE SKIRT MADE FROM BASIC A LINE SKIRT



# WRAP AROUND SKIRT METHOD

---

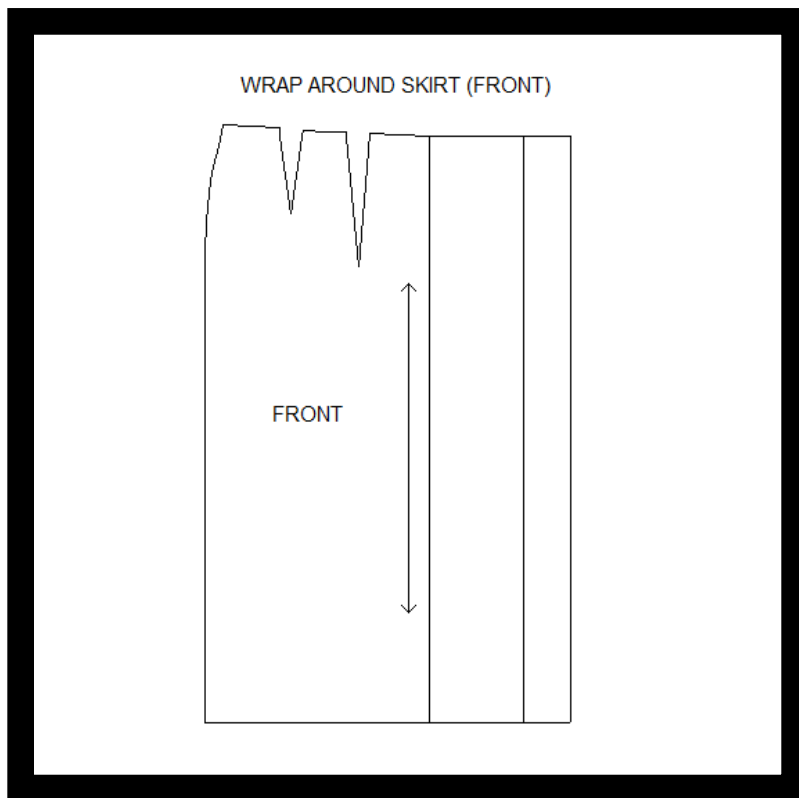
.Trace out the basic tight fitted skirt with darts

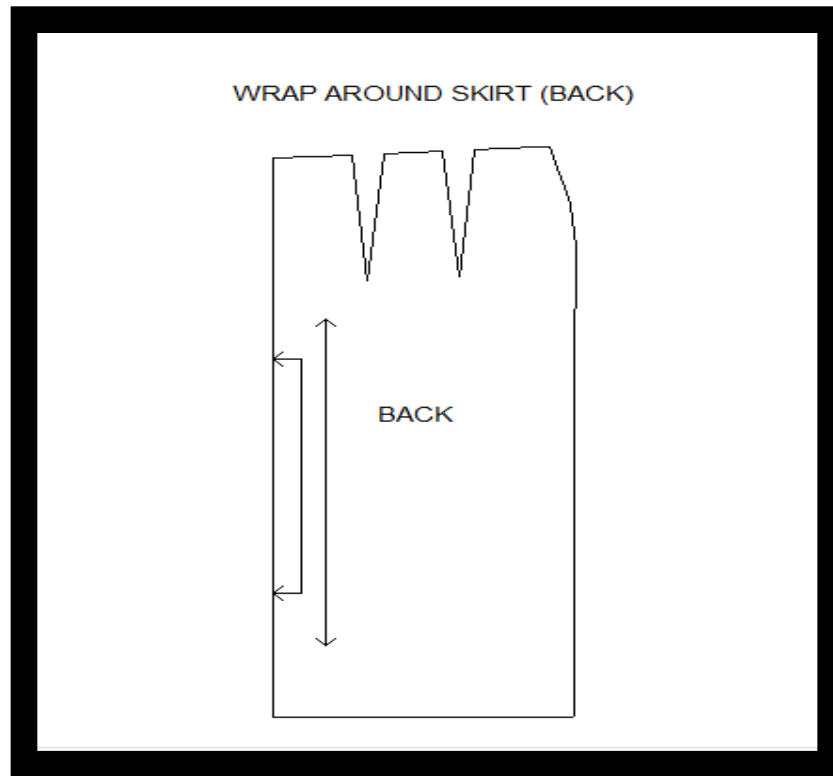
Give an extension center front of 10 cm (4)for overlapping and 5 cm (2) for fold

.both the sides of front will have same amount of extension

. center back is on fold

.Draw the grainline and write down the measurements to complete the drafting





## GORED SKIRT MADE FROM BASIC A LINE SKIRT

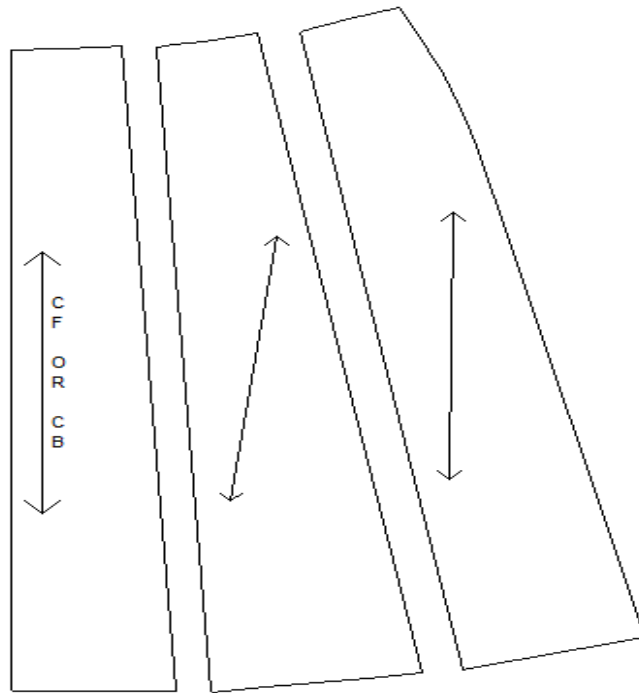
---

This skirt looks like 6 paneled skirt ,the only difference is that the position of panels can be changed in this skirt according to the design

### Method

- decide upon the number and position of pannles .diagram shown six panels ,3 In front and 3 in back
- take the drafting of basic A line skirt
- mark the panel lines on that drafting
- slash on these lines and separate the panels
- mark the grainline and write down the measurements to complete the drafting
- mark the grainline and write down the measurements to complete the drafting

## GORED SKIRT MADE FROM A LINE SKIRT



# BERMUDAS OR CULOTTES SKIRT

## METHOD

- trace out the drafting of basic skirt front and back
- $AB = \frac{1}{3}$  round hips
- $BD = \frac{1}{2} BC$
- $B'D = \frac{1}{2} B'C'$
- $CE = 7.5\text{cm} [3'']$
- $EF = 2.5\text{ cm} [1'']$
- shape the hemline from point F and also connect it to the waistline with a straight line
- length of Bermudas or culottes can be kept as any length from thighs till ankle
- for more flare close the darts and open the hem as done in a line skirt

-draw a grainline and write down the measurements to complete the drafting

