

## 2 (b) ADULT'S BODICE BLOCK BY BLOCK METHOD

Age - 15+

Height - 5ft

### Measurements

Length -  $2/8$  of height =  $37.5$  cm (15")

Round bust = ~~88 cm~~ (34")

Pivot point = ~~23 cm~~ (9")

### Size of paper

Length of paper = Length of bodice block

Width of paper =  $1/2$  Round bust + ~~2 cm~~ (1") ease

### METHOD

#### Construction lines

- Take the given size of ~~paper~~ *rectangle*
- Mark the corners ABCD
- Divide AC into  $1/2$  Mark the line EE
- Divide AE into  $1/2$  Mark the line FF
- Divide AF into  $1/2$  Mark the line GG
- Line HH' is 2 cm ( $3/4$ ") below line AB
- Divide AB into 6 equal parts. Mark the lines 1,2,3,4,5
- Line 6 is 1 cm ( $1/2$ ") away from line 3 towards line 2

#### Back

- Point I is 1 cm ( $1/2$ ") away from point 1 towards point A
- Join HI for back neckline curve
- Where line 2 and HH' intersect is a point called J
- Join IJ and extend it by 2.5 cm (1") to K
- Point L is the intersection point of line 2 and FF
- Point M is 2 cm ( $3/4$ ") out from point L
- Where line 6 and EE' intersect is a point called N
- Join KMN for back armhole curve

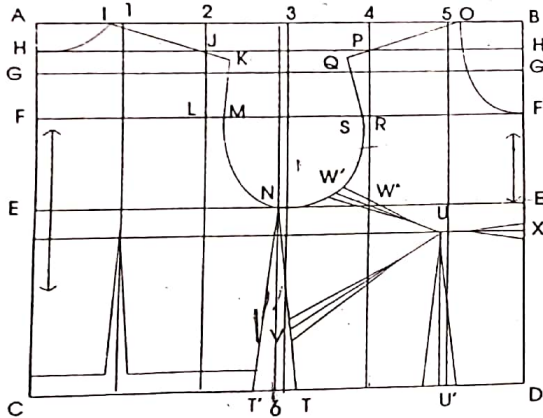
#### Front

- Point O is 1 cm ( $1/2$ ") away from line 5 towards point B
- Join OF with deep inward curve for front neckline
- Where line 4 and line HH' intersect is a point called P
- Join OP and extend it by 2.5 cm (1") to Q

- Where line 4 and FF' intersect is a point called R
- Point S is .5 cm (1/4") away from point R towards line 3
- Join points QSN for the front armhole curve
- Points T and T' are 2.5 cm (1") away on either side of line 6
- Join NT and NT' for the side seams of front and back respectively

**Darts**

- Draw the bustline 23 cm (9") below AB (pivot point measurement)
- Go 1 cm (1/2") away from line 5 towards line 4 and mark the point called U (Bust Point)
- From U draw a perpendicular to meet the waistline CD and mark the point U'
- **WAISTLINE DART** - Width of waistline dart is 2 cm (3/4") on either side of U' and length of this dart is marked till 1 cm (1/2") away from the pivot point U



*Handwritten note:* Centre Front Dart → Draw straight line from U towards Bust Point. This is blocks dart as per waist.

- **SIDE SEAM DART** - Point V is 10 cm (4") below point N on NT line. Join U and V. Width of this dart is 1 cm (1/4") on either side of V. Length of this dart is marked till 2.5 cm (1") away from pivot point U
- **ARMHOLE DART** - Where line 4 and line EE' intersect is a point called W. Join UW and extend it till armhole curve and mark that point as W'. Point W' should be the deepest point of armhole. Width of this dart is .5 cm (1/4") on either side of W', and length of this dart is marked till 2.5 cm (1") away from pivot point U.
- **BACK DART** - Shorten the back by 2.5 cm (1") because of the side seam dart in front. Width of back dart is 1 cm (1/2") on either side of line 1 and length is marked 1 cm (1/2") taller than the bust line.
- Mark the grainline and write down the measurements to complete the drafting.

**B. SLEEVE BLOCK**

**1. CHILD'S SLEEVE BLOCK**

Age - 2 years

Height - 92 cm (36-1/4")

**Measurements**

Length = length of sleeve = 12.5 cm (5")

Width = 1/2 round chest - 5 cm (2") or upper round arm + 6.25 cm (2-1/2") = 23 cm (9") (1/2 Round Chest - 5")

**Size of paper**

Length = Length of sleeve = 12.5 cm (5")

Width = Width of sleeve = 23 cm (9")

**METHOD**

- Take the given size of paper rectangle
- Fold the width of paper into 1/2 and keep the fold on left hand side
- Mark the corners ABCD
- BE is the depth of cap (armhole curve of sleeve) = 1/4 length of bodice block