

# The pattern of a kimono sleeve

Published 5 years ago by cristina

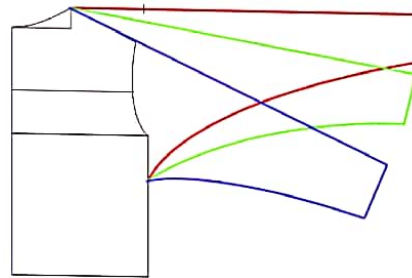


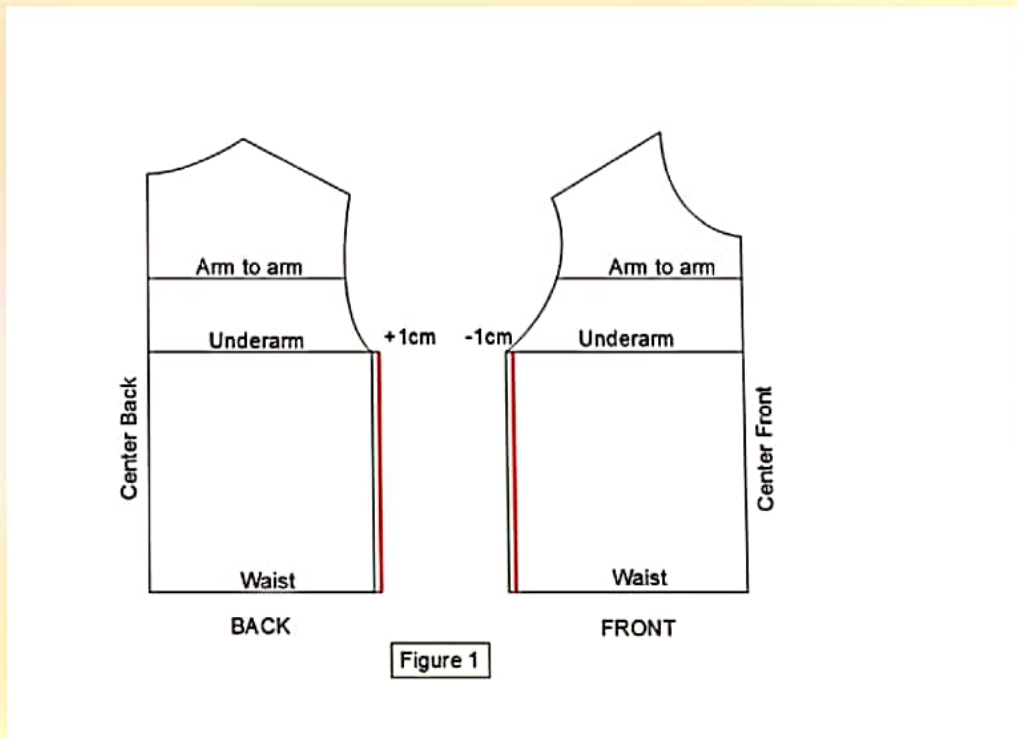
Figure 6

One of my readers asked me to write a tutorial on the kimono sleeve. I tried it once, I found the pattern making method rather simple but the result was so disappointed that I completely put that idea aside. It was problem with the fabric choice more than the pattern. So I prefer to warn you, for this type of sleeve, choose a light knit fabric. The kimono sleeve is very fashionable this year, in its various versions.

In this tutorial, I'll show you the simple one, the kimono sleeve without gusset. This method of construction comes from the book "The fashion pattern-making, Volume 2" by Teresa Gilewska. Let's start with the beginning.

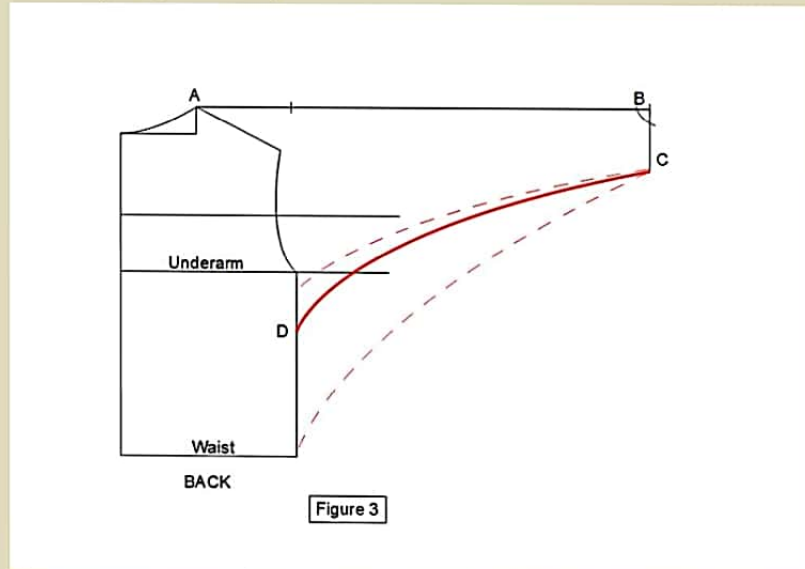


1. Take your made to measure bust pattern, without darts but with enlargements, and make sure that the front waist width is equal to the back waist width. In other words, remove 1 cm or more from the front and add 1 cm or more to the back (Figure 1).

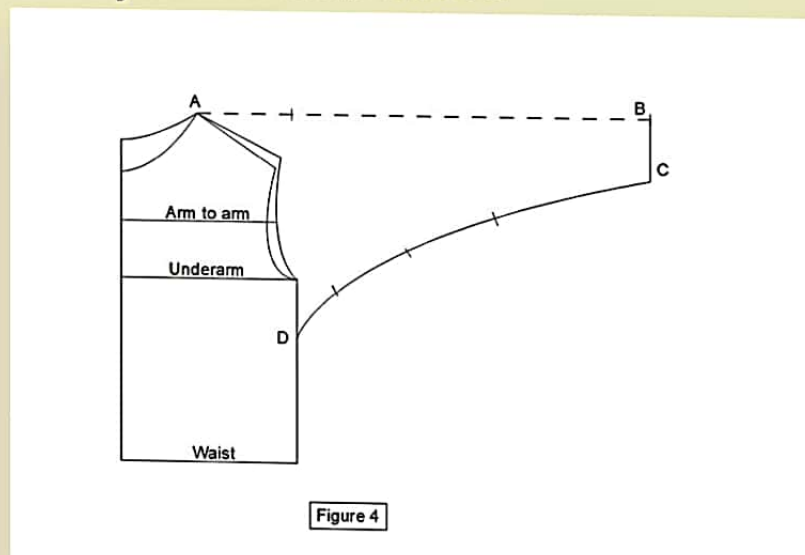


2. On the balanced front and back pattern, draw an horizontal line from the neckline.  $AB = \text{shoulder length} + \text{the desired sleeve length}$ . From point B, draw a vertical line in right angle that corresponds to the sleeve bottom.  $BC = \frac{1}{2} \text{ width of the bottom of the sleeve}$  (Figure 2)

3. From point C, draw the under-sleeve line. This line must meet a platitude of few inches below the wrist and therefore form a right angle in D. CD forms the shape of the kimono. Following the desired amplitude, D is between the armhole line and the waist line (Figure 3).



4. The pattern can be done on fold by removing the stitching on the shoulder. In this case, unfold the pattern and draw the front and back neckline (Figure 4 and 5). Place the notches. You have your dolman sleeve



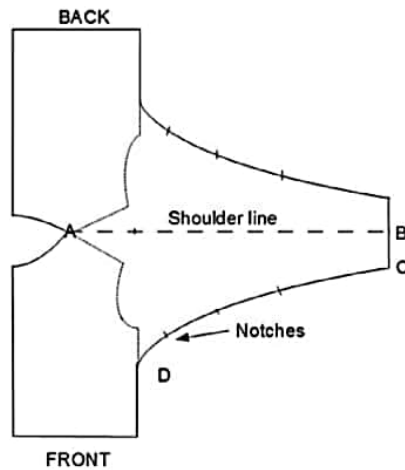


Figure 5

5. This construction is not suitable for heavy fabrics, because the thickness of the folds formed under the arms can cause discomfort in the movements. To reduce the wideness, you need to move down the sleeve. This inclination of the sleeve is limited to the shoulder line (Figure 6). Below the shoulder line, the kimono sleeve requires the construction of a gusset.

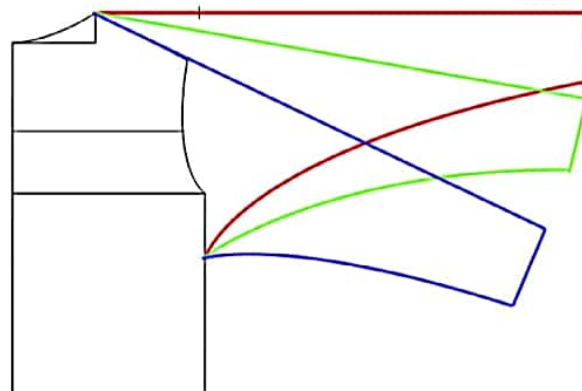


Figure 6