



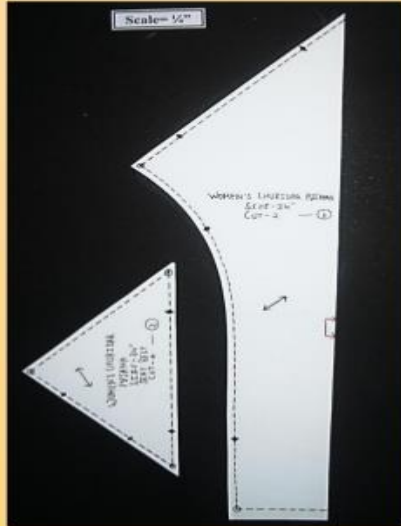
# CONSTRUCTION OF CHURIDAR

FOR B.SC SEM. IV

SUBJECT-GARMENT CONSTRUCTION AND  
DRAPING

FROM MISS. HARPREET KAUR

ASST. PROF. IN FASHION DESIGNING



PAPER PATTERN OF WOMEN'S CHURIDAR PAJAMA

Scale = 1/4"



### WOMEN'S CHURIDAR PAJAMAS

Churidars, or more properly churidar pajamas, are tightly fitting trousers worn by both men and women in South Asia. Churidars narrow more quickly, so that contours of the leg are revealed. They are usually cut on the bias (at a 45° angle to the grain of the fabric) which makes them naturally stretchy. The word "churidar" is from Hindi and made its way into English only in the 20th century.

#### Measurements

Length- 36"

Round Leg- 14"

Round Bottom- 12"

