

Demo for Stlye Sheet



Style Sheet



Women's Wrap around Pleated skirt

Season: Spring/Summer 20
Style: No-02
Sizes: S,M,L,XL
Description: Skirt
Range: Women's

Fabrication

- #1 Cotton,
Knife pleats
- #2 Faux Leather,
Wrap around

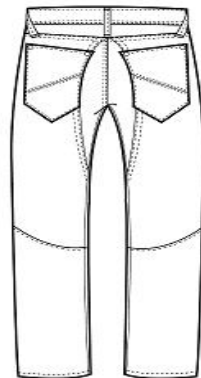
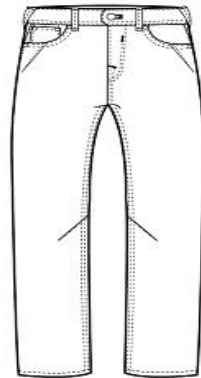
SPI: 2.5cm
Stitch type: Single needle lockstitch



STYLE: 5660

Fit: Low Tapered
 Wash Name: Old South
 Wash Details: Distressed (vintage tint, 3D Whiskers, permanganate, resin baked creases, abraision)
 Fabric: Ring/Ring spun, 3x1 right hand twill, 13 oz. 100% cotton,

MEN - S/S 2013



Ava Marie Carmichael

ZARA

WOMEN'S DRESSES

Taylor Pines

UPDATED STYLES - FALL 2013 - 8/30 IMMEDIATE DELIVERY

<p>"THE BOW" Style #ZUS001</p> <p>PRINTED SHIFT RACERBACK DRESS WITH LEATHER INSERTS</p> <p>Cost: \$27.97 Fabrics: Printed Ottoman 100% Cotton Contrast: Leather 100% Pig Sizes: XS-L</p> <p>Color swatches: Grey/Black, Grey/Yellow, Black/Grey</p>	<p>"THE COLUMN" Style #ZUS002</p> <p>CAP SLEEVE MAXI DRESS WITH BACK LEATHER STRAPS</p> <p>Cost: \$20.97 Fabrics: Charmeuse 100% Polyester Trim: Leather 100% Pig Sizes: XS-L</p> <p>Color swatches: Green, Coral, Purple</p>	<p>"THE RACERFRONT" Style #ZUS003</p> <p>EXAGGERATED RACERFRONT DRESS WITH FRILL HEM</p> <p>Cost: \$31.47 Fabrics: Savanna 65% Polyester, 35% Cotton Trim: Leather 100% Pig Sizes: XS-L</p> <p>Color swatches: Coral/Grey, Blue/Grey, White/Grey</p>
--	---	--

CLASSIC COMFORT - HOLIDAY 2013 - 10/30 DELIVERY

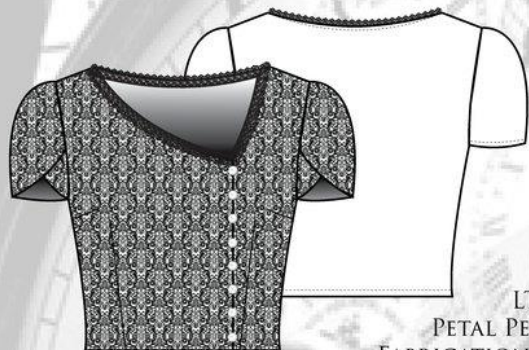
<p>"THE SHIFT" Style #ZCC001</p> <p>SHORT SLEEVE SHIFT DRESS WITH FRONT YOKE</p> <p>Cost: \$24.47 Fabrics: Suede Ultra 100% Polyester Contrast: Satin Suede 99% Cotton, 1% Lycra Sizes: XS-L</p> <p>Color swatches: Cream/Coco/Grey, Grey/Cranberry/Cream, Ash Blue/Cream</p>	<p>"THE SKATER" Style #ZCC002</p> <p>SKATER DRESS WITH RAGLAN SLEEVES</p> <p>Cost: \$31.47 Fabrics: Georgette 100% Polyester Contrast: Leather 100% Pig Sizes: XS-L</p> <p>Color swatches: Golden/Cream, Cream/Tan, Cranberry/Cream</p>	<p>"THE TURTLE" Style #ZCC003</p> <p>LONG SLEEVE TURTLE NECK DRESS WITH RIB KNIT TRIM</p> <p>Cost: \$20.97 Fabric: Intarlock: 65% Polyester, 35% Cotton Microfiber Kuit: 93% Polyester, 7% Lycra Contrast: 2x2 Rib: 100% Cotton Tweed: 60% Wool, 40% Polyester Sizes: XS-L</p> <p>Color swatches: Olive Green/Cream, Tan/Brown/Cream, Grey/Cream</p>
---	---	--

ROARING TWENTIES - HOLIDAY 2013 - 11/30 DELIVERY

<p>"THE SCOOP" Style #ZRT001</p> <p>LONGSLEEVE BOATNECK DRESS WITH LOW SCOOP-BACK & FRILL HEM</p> <p>Cost: \$34.97 Fabrics: Crinkled Charmeuse 100% Polyester Trim: Puris Sizes: XS-L</p> <p>Color swatches: Blush, Champagne, Silver, Black</p>	<p>"THE HIGH/LOW" Style #ZRT002</p> <p>SLEEVELESS BOATNECK DRESS WITH HIGH/LOWHEM</p> <p>Cost: \$31.47 Fabrics: Filament Damask 100% Polyester Trim: Leather Fringe 100% Pig Sizes: XS-L</p> <p>Color swatches: Champagne, Burgundy, Black</p>	<p>"THE BODYCON" Style #ZRT003</p> <p>SHORT SLEEVE BODYCON DRESS WITH PLEATED FRONT</p> <p>Cost: \$27.97 Fabrics: Jacquard 100% Polyester Contrast: Stretch Suede 98% Cotton, 2% Lycra Trim: Leather 100% Pig Sizes: XS-L</p> <p>Color swatches: Black/Black, Champagne/Gold, Black/Grey</p>
--	--	---

Black & White Collection

Fall 2014
Loucine Tahmasian

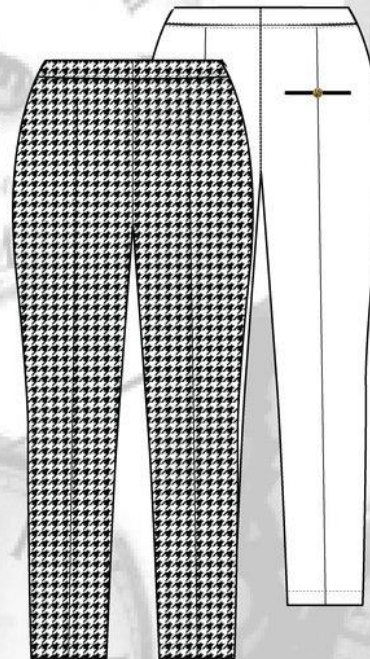


LT-001
PETAL PEARL BLOUSE
FABRICATION: 100% COTTON
TRIM: LACE 100% NYLON WITH
STRAIGHT DOWN PEARL BUTTONS.
SIZE: S-XL
WHSL: \$20.00



LT-002
MISS ELEGANCE
FABRICATION: 97% COTTON
3% SPANDEX
TRIM: BACK BOLD VISIBLE ZIPPER
SIZE: S-XL
WHSL: \$35.00

LT-003
STRAIGHT FITTED TROUSERS
FABRICATION: 66% POLYESTER
34% VISCOSE
TRIM: GOLD BUTTON PLACED
ON BACK POCKETS
SIZE: S-XL
WHSL: \$30.00



LT-004
LEATHER JACKET
FABRICATION: SHELL-100% POLYURETHANE
LINING: 100% POLYESTER
TRIM: VISIBLE ZIPPER POCKETS & ZIP
DOWN FRONT
SIZE: S-XL
WHSL: \$35.00

