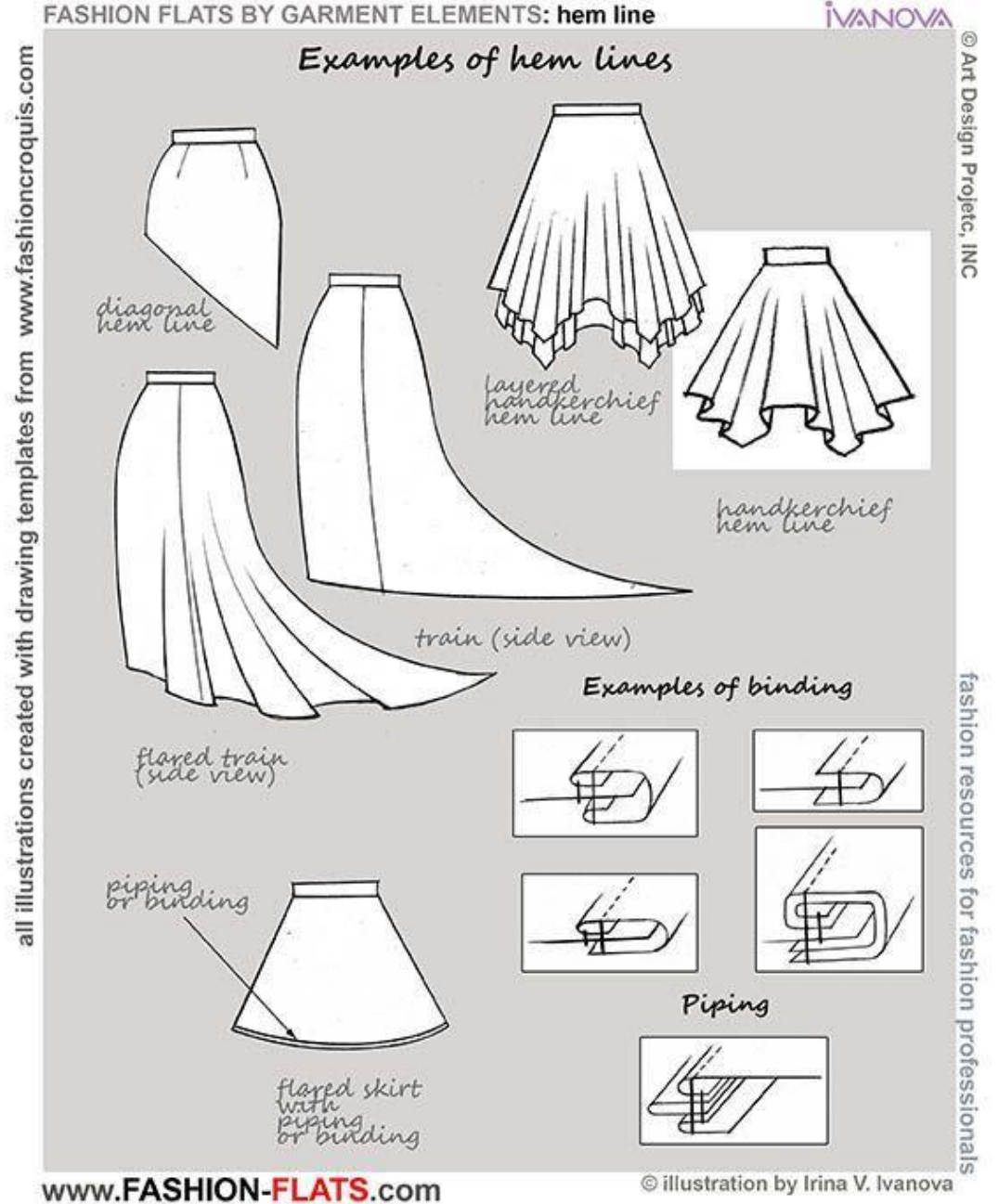


Detailing of Hemlines





Detailing of Edging

Baby Ballerina

Spring Summer 2016
Girls 0-18 months

100% Cotton Poplin dress with ruffle detailing on sleeves and border of the dress.



100% Cotton Bloomers with gathered details



100% Polyester Microfleece blanket with ruffle edging



Prints and Graphics Used



Colour Palette:



2560 x 1810

Baby Ballerina

Spring Summer 2016
Girls 0-18 months

3 Pack Baby Grows
100% Cotton
Sleeve Ruffle Detail



Knit Baby Grow
Front Embroidery
Motif



Cotton Jersey and
Polyester Soft Touch
Baby Grow

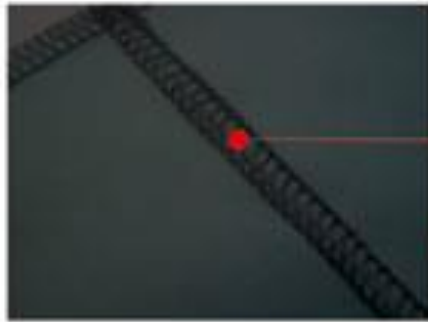
Prints and Graphics Used



Baby Grow
Front Embroidery
Motif

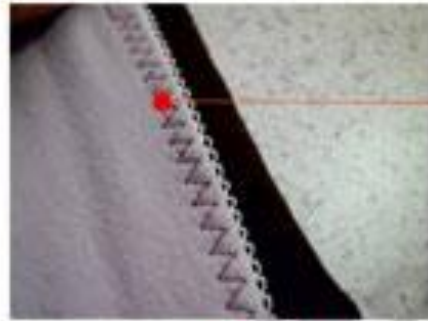


DIFFRENT STITCHING EXEMPLE

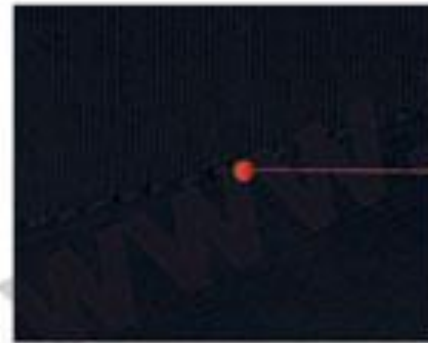


show flatlock stitch

Single needle edge stitch



Zig zag stitch



Single needle top stitch

Double needle cover stitch



Overlock stitch

