

TEMPLATE - SLEEVES

SLEEVES

Introduction

Sleeves have been used as a device for changing the silhouette of garments throughout the history of fashion. In the 1880s, the dominant silhouette was a leg-of-mutton sleeve—a sleeve that puffs out from the shoulder with the lower section tapered toward the wrist. For the next 10 years, the sleeve puff varied from slim to voluminous and billowy. In the 1920s, a sleeve with a darted or an extended cap became popular. In the 1940s, the sleeve was smooth and included padded shoulders ranging from square and tailored to oversized exaggeration. There was a return to a natural shoulder with minimal padding in the 1950s. This gave tailored garments an even look along the shoulder seam. Since then, these important sleeve silhouettes have appeared and disappeared and will probably reappear again.

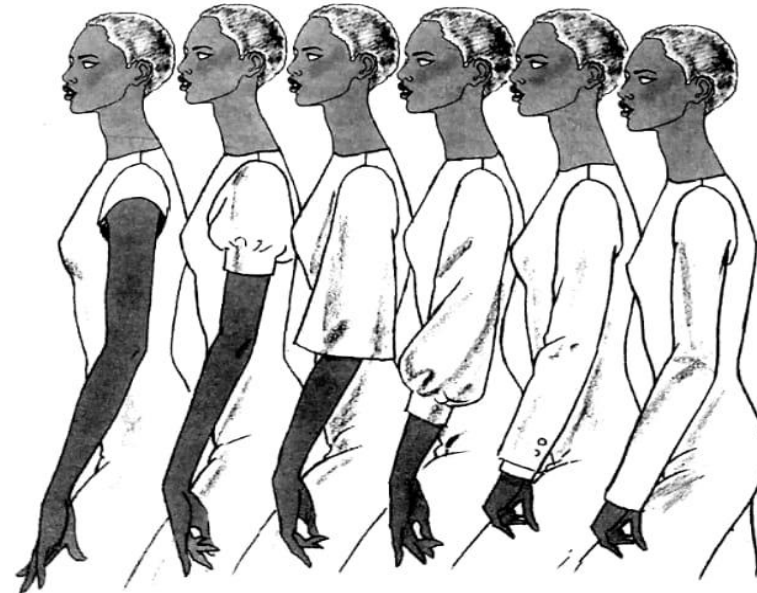
There are two major classifications of sleeves: the set-in sleeve cut separately and stitched into the armhole of the bodice and the sleeve combined with part or all of the bodice. Set-in sleeves are introduced in this chapter; sleeve-bodice combinations are discussed in Chapter 15.



Set-in Sleeve

Set-in sleeves can be designed to fit the armhole smoothly or with gathers. They can be designed fitted or with exaggerated fullness and can be cut to any length.

The hemline of the sleeve can be finished in a number of ways as will be illustrated in the chapter.



By –Mrs. Navneeta

Asst. Prof. in FD

SLEEVES

TERMINOLOGY

Terminology

Sleeve cap. Curved top of the sleeve from front to back.

Cap height. Distance from biceps to cap at center.

Biceps level. Widest part of the sleeve dividing cap from lower sleeve.

Sleeve ease. Additional allowance at biceps, elbow, and wrist levels accommodating the circumference of the arm and allowing ease for freedom of movement. Ease ranges from 1 1/2 to 2 or more inches.

Cap ease. Difference between cap and armhole measurement (ranging from 1 to 1 7/8 inches).

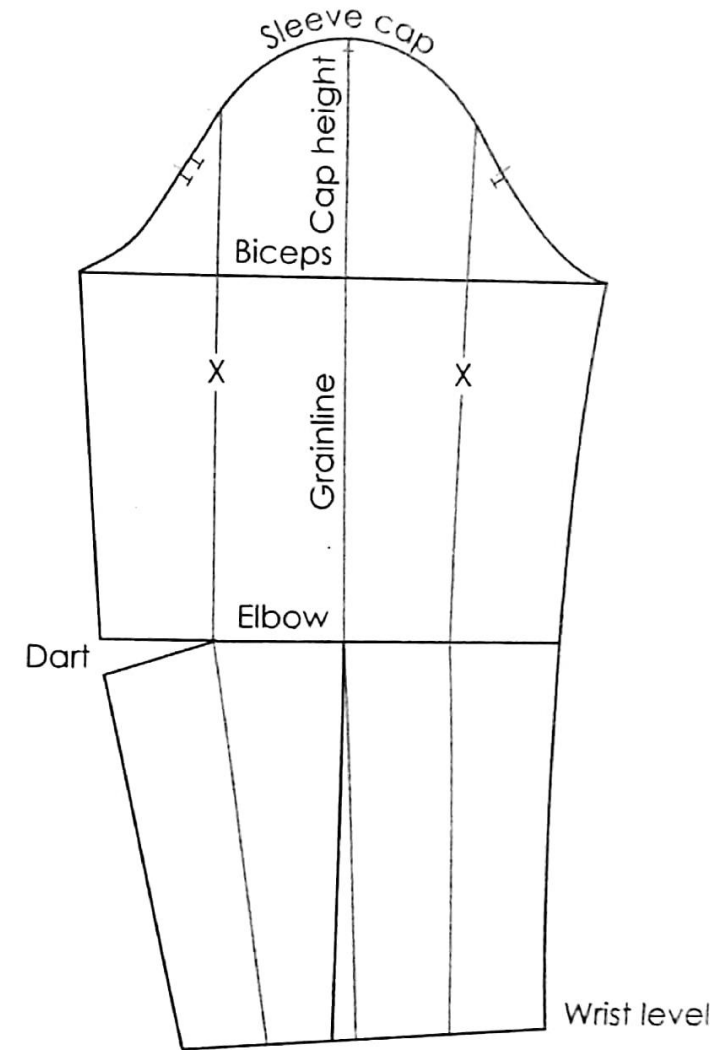
Elbow level. The location of the dart is level with the elbow of the arm.

Wrist level. The bottom (hemline) of the long sleeve, level with wrist.

Grainline. Center of sleeve from top of cap to wrist level—straight grain of sleeve.

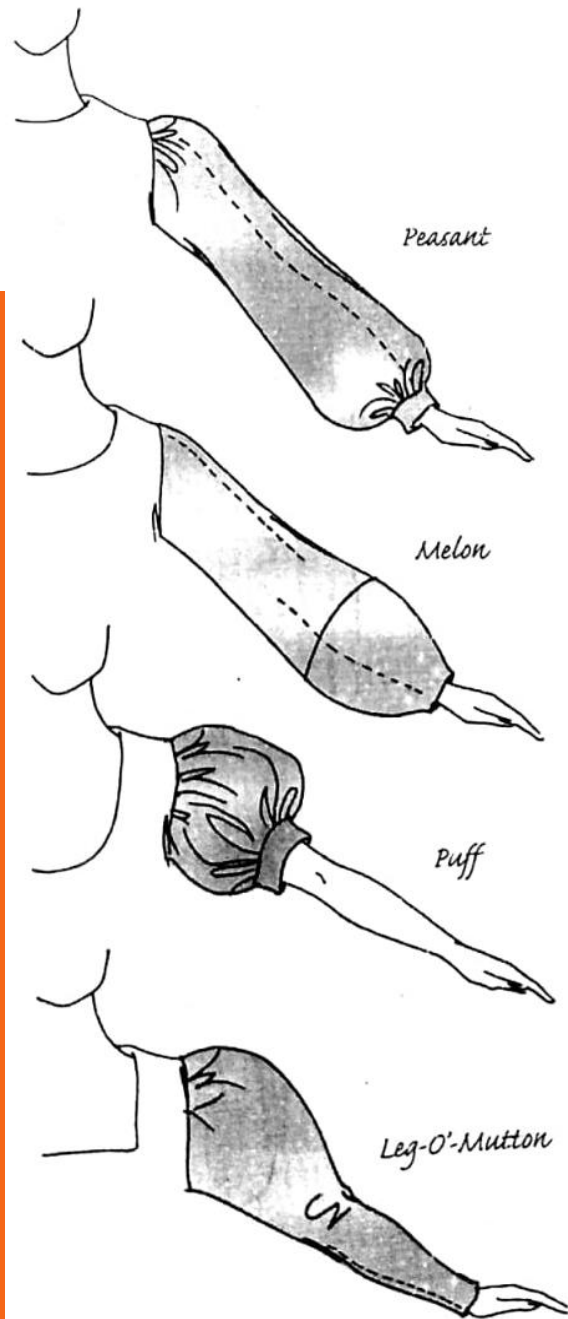
Quartering sleeve. Sleeve divided into four equal parts from cap to wrist. Used as guidelines for spreading the sleeve. Quarter sections are labeled X (see illustration).

Notches. One notch indicates front sleeve; two notches indicate back sleeve. Cap notch indicates where sleeve and shoulder meet (location can vary from center grainline).

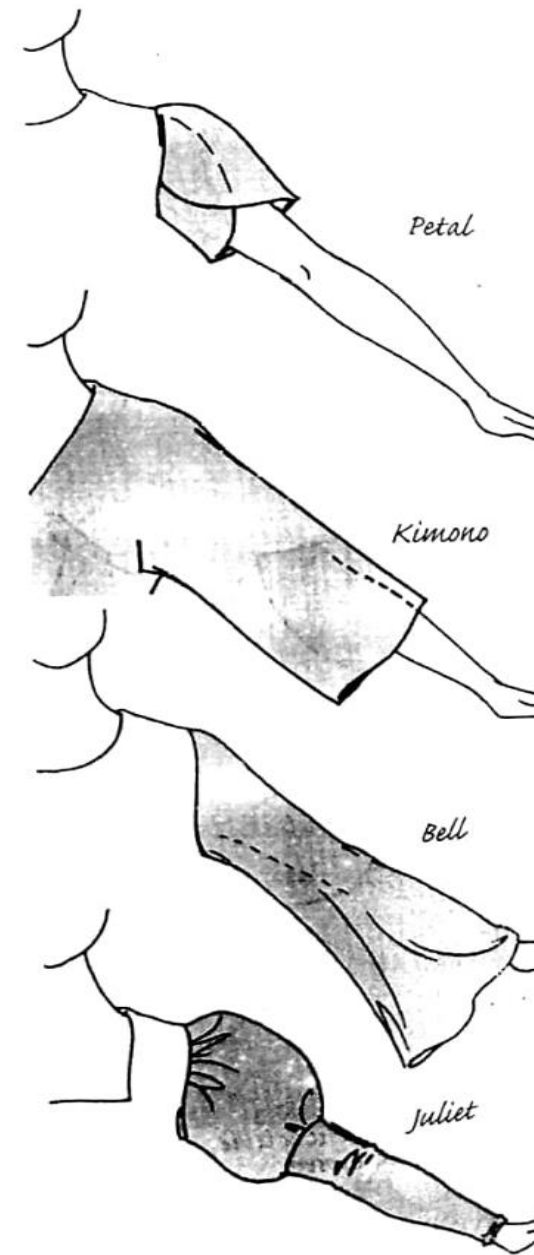


By –Mrs. Navneeta

Asst. Prof. in FD



SLEEVES VARIATIONS



By -Mrs. Navneeta

Asst. Prof. in FD



Peasant Sleeve

A Full Sleeve with elastic or draw string at the sleeve hem. There are many variations

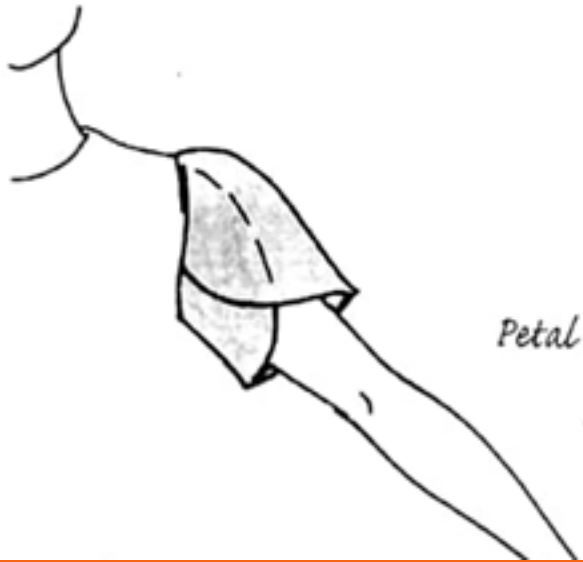
A long set in Sleeve with head towards the wrist. The bottom part flares from a fitting wrist to meet the Flare of the top. Both are seamed together a few inches above the wrist

Lantern Sleeve



By –Mrs. Navneeta

Asst. Prof. in FD



Petal Sleeve

A sleeve is cut without an underarm seam and is shaped and folded on the upper arm.

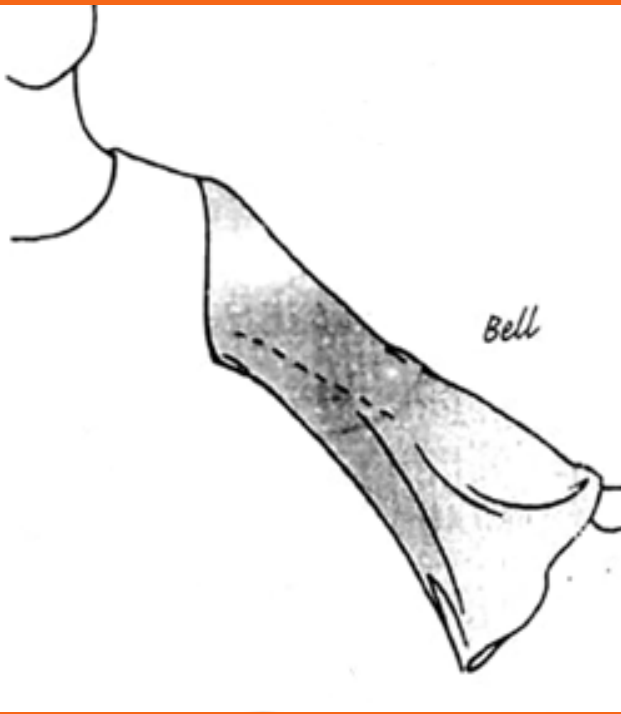
A long sleeve that is complete extension of the bodice to the wrist. The seam lines are along the top of the sleeve and at the underarm.

Kimono Sleeve



By -Mrs. Navneeta

Asst. Prof. in FD



Bell Sleeve

A long or three - fourth sleeve in the shape of bell at the Hemline.

A two part sleeve, similar in effect to the leg of mutton. The top part of the sleeve is full and gathered, while the lower part of the sleeve is fitted to the arm and is seamed to the top part above the elbow.

Juliet Sleeve



By -Mrs. Navneeta

Asst. Prof. in FD

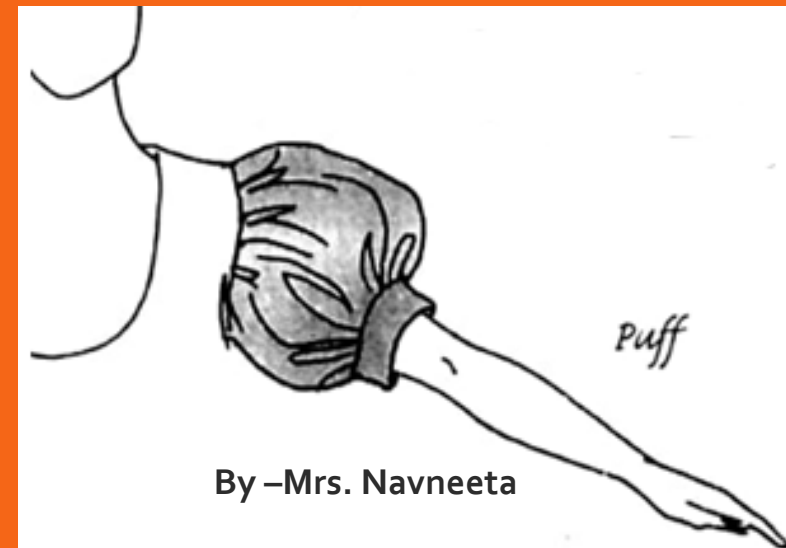


Leg- O'-Mutton Sleeve

A full gathered sleeve head is set into the bodice and The long sleeve tapers to fit towards the wrist.

A set in sleeve that has fullness at the sleeve head and Base. It is set into the bodice and controlled at the base By a cuff or elastication to give a puffed effect.

Puff Sleeve



By -Mrs. Navneeta

Asst. Prof. in FD