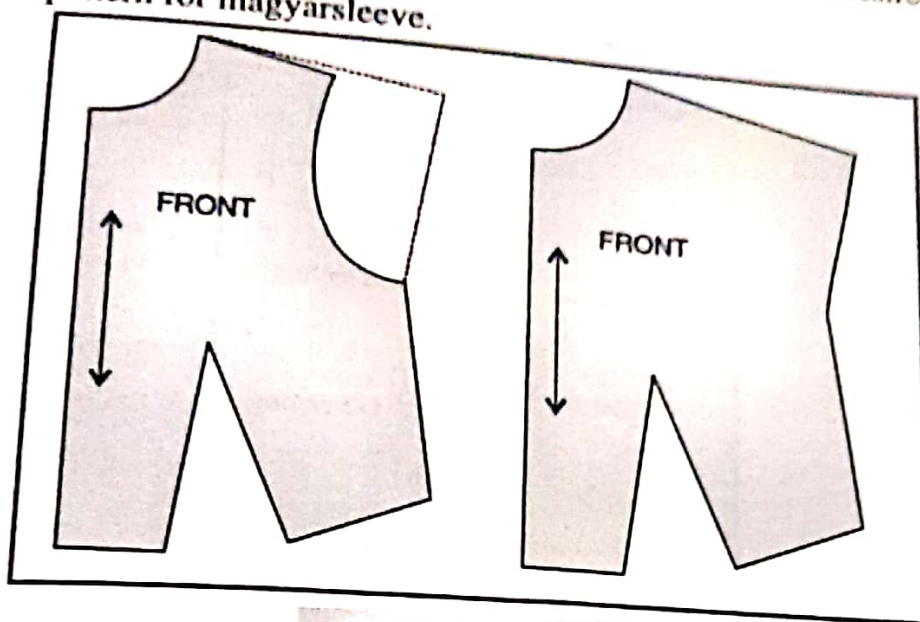


10. MAGYAR SLEEVE

191

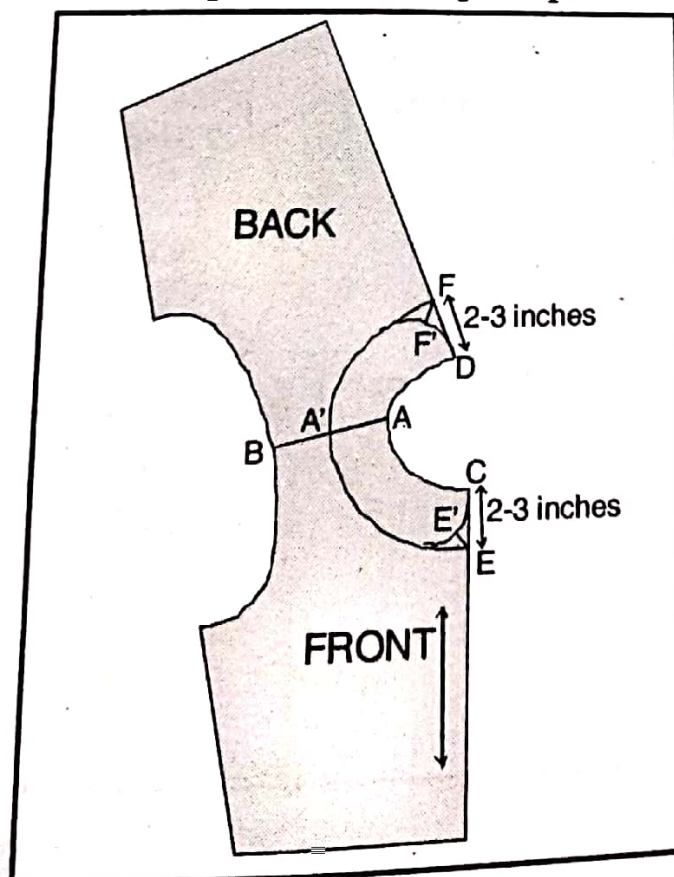
1. Trace the basic bodice sloper.
2. Make a new shoulder line and extend it over the sleeve cap to the desired length of sleeve and square it to the armpit.
3. Retrace the pattern for magyarsleeve.



COLLARS

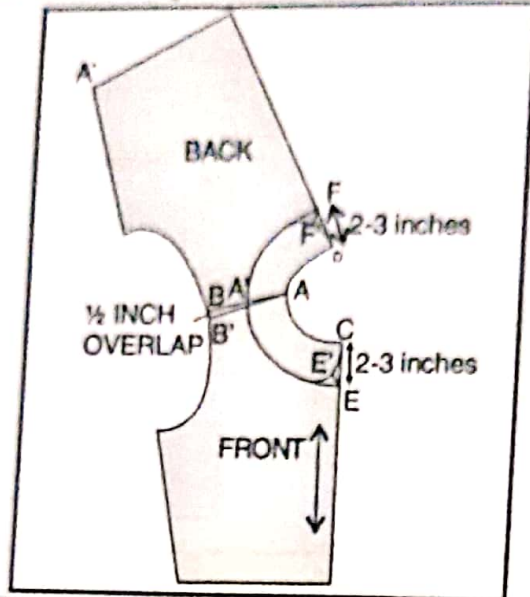
1. FLAT PETER PAN

1. Place the front and back of the bodice in such a manner that shoulder slopes of the two meet each other.
2. Take $CE = DF = AA' = 2$ to 3 inches. Join $FA'E$ with a curve.
3. Take $EE' = FF' = 1$ inch at 45 degree angle. Blend the curve.
4. Cut from $DF'A'E'CAD$. This the pattern for flat peter pan collar. Cut 4 pieces.



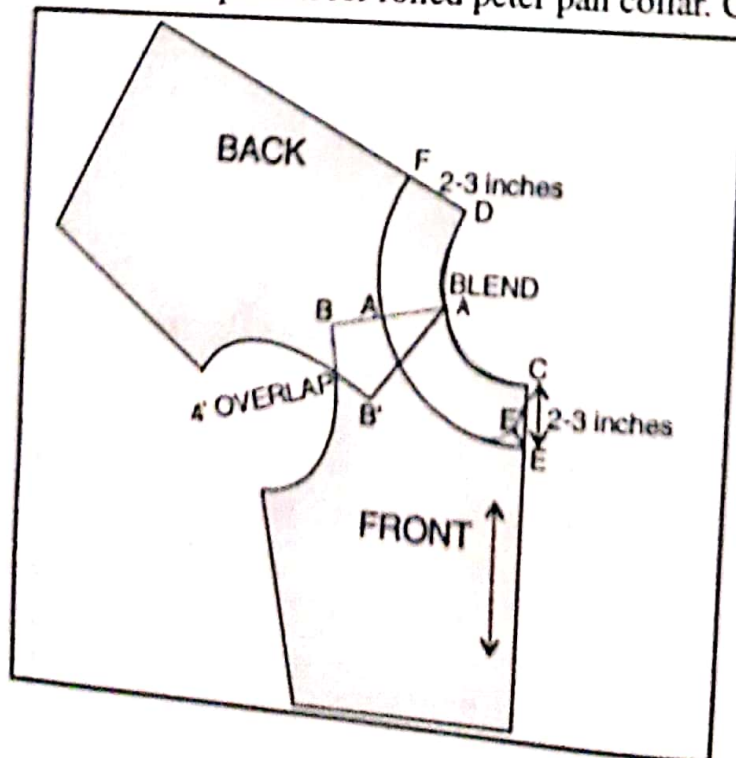
2. RAISED PETER PAN

1. Place the front and back of the bodice in such a manner that shoulder slopes of one overlaps the other at the lowest shoulder point by 1/2 inch.
2. Take $CE = DF = AA' = 2$ to 3 inches. Join $FA'E$ with a curve.
3. Take $EE' = FF' = 1$ inch at 45 degree angle. Blend the curve.
4. Cut from $DFA'E'CAD$. This the pattern for raised peter pan collar. Cut 4 pieces.



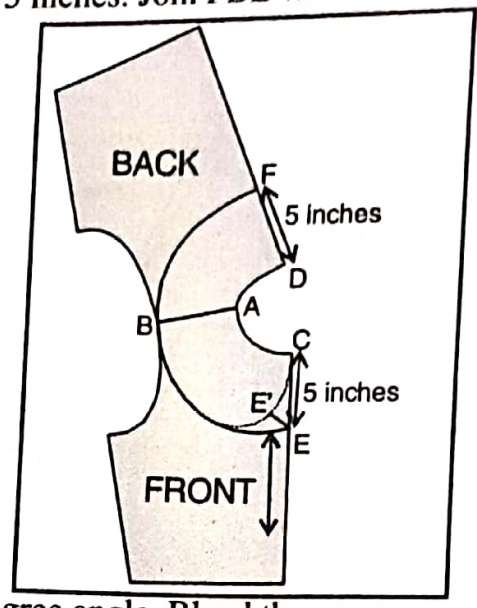
3. ROLLED PETER PAN

1. Place the front and back of the bodice in such a manner that shoulder slopes of one overlaps the other at the lowest shoulder point by 4 inch.
2. Take $CE = DF = AA' = 2$ to 3 inches. Join $FA'E$ with a curve.
3. Take $EE' = 1$ inch at 45 degree angle. Blend the curve.
4. Cut from $DFA'E'CAD$. This the pattern for rolled peter pan collar. Cut 4 pieces



4. CAPE COLLAR

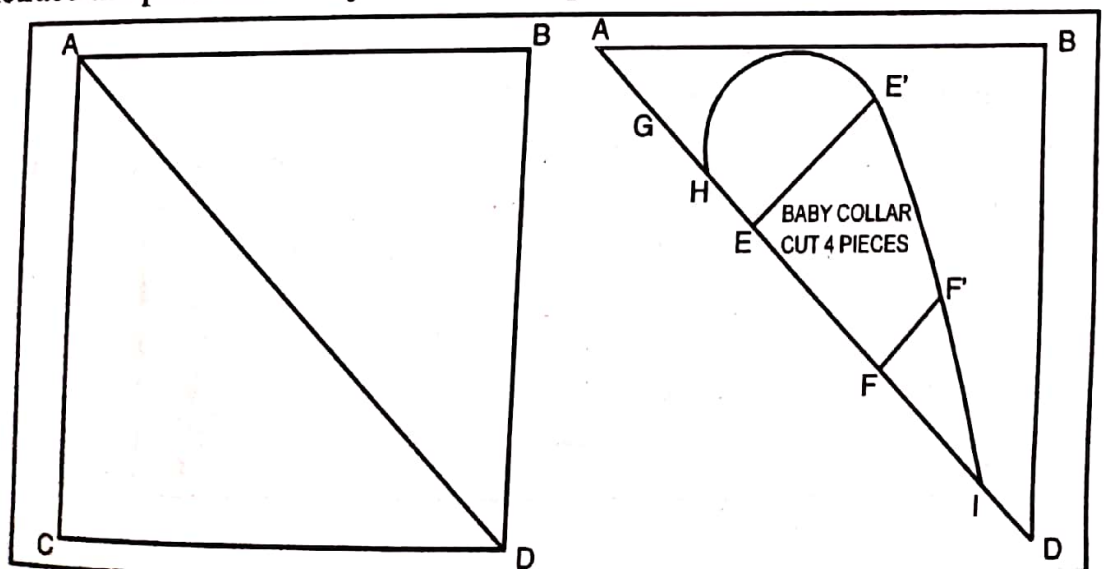
1. Place the front and back of the bodice in such a manner that shoulder slopes of front and back meet each other.
2. Take $CE = DF = AA' = 5$ inches. Join FBE with a curve.



3. Take $EE' = 1$ inch at 45 degree angle. Blend the curve.
4. Cut from DFBE'CAD. This the pattern for cape collar. Cut 2 pieces. The opening for placket can be placed at either front and back. In this pattern the placket opening is in the front, therefore place the fabric on fold from DF and cut 2 pieces.

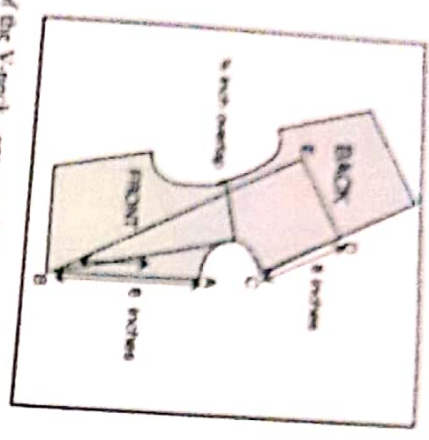
5. BABY COLLAR

1. Make a square ABCD, where each side is $\frac{1}{2}$ of round neckline.
2. Fold the paper diagonally along AD.
3. Divide AD into three equal parts mark E and F
4. Take $EE' = 2$ inches and $FF' = 1 \frac{1}{2}$ inch.
5. Divide AE into three equal parts. Mark G and H.
6. From H measure point I, such that $HI = \frac{1}{2}$ of round neckline.
7. Join HI with a curve touching the edge of the square at AB line, E', F' and I.
8. Retrace the pattern of baby collar. Cut 4 pieces.



6. SHAWL COLLAR

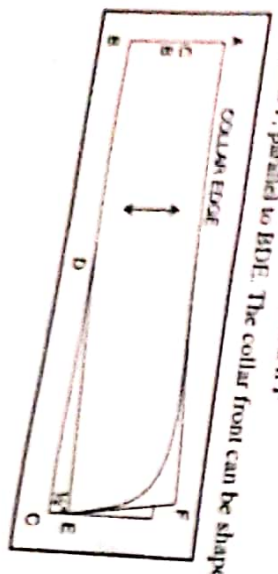
1. Place the front and back of the bodice in such a manner that the front shoulder dips over the back shoulder slope by 1/2 inch.



2. A to B is the depth of the V-neck, approx. 6 inches.
3. CD = 8 inches.
4. DE = 7 inches.
5. Join BCDE and B, this is the shape of the collar at front and back.
6. Cut collar from paper.

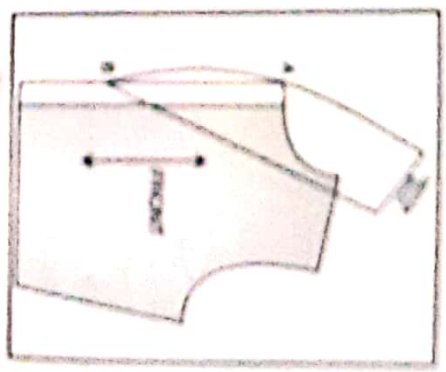
7. MANDARIN COLLAR

1. Square a line at the center of the paper equal to AB = 1 1/2 inch which is the collar stand.
2. BC = measurement of front and back neck combined.
3. BD = center back to shoulder measurement.
4. Square up 1/2 inch from C. Mark E. Draw a curved line from E to D, completing the neck line edge of collar.
5. Square 1 1/2 inch line at right angles to ED. Mark it F.
6. Draw a line from A to F, parallel to BDE. The collar front can be shaped as shown.



8. SHAWL COLLAR

1. Trace the basic bodice block for making collar on a piece, slightly lower the neckline and let making collar on an underwire, slightly raise the neck.
2. Trace the neck line A from point A to B to a desired length. Allow 1/2 inch. Trace the neckline.
3. Extend the neckline above the shoulder equal to half the length of the neck and give some allowance draw the collar shape.
4. This collar includes both the stand and fall.



SKIRTS

1. A-LINE SKIRT

1. Trace the basic skirt block.
2. Mark a slash line from the dart near the side seam.
3. Slash on the line from hemline till the dart point, not through.
4. Close the dart and spread the slash line.
5. Draw a straight side seam line from the hip level and extend it with the hem of the skirt.
6. Retrace the final pattern of A-line skirt.

