

# *Satin Weave*

FOR B.SC SEM. II

**SUBJECT-FABRIC CONSTRUCTION**

**FROM**

MISS HARPREET KAUR

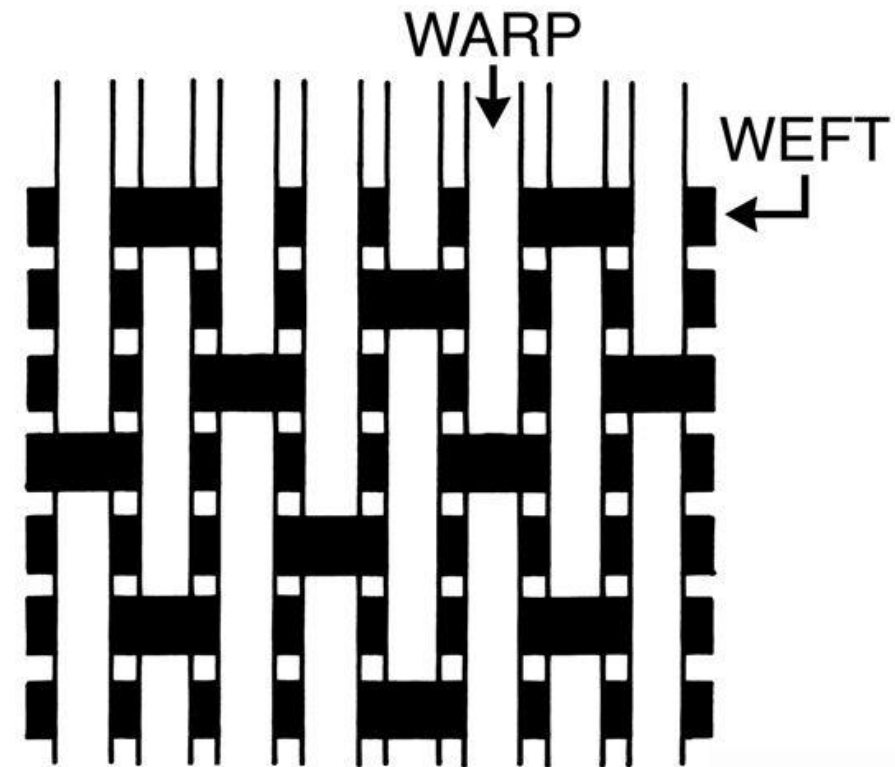
ASSISTANT PROFESSOR IN FASHION  
DESIGNING



# *Satin weave*

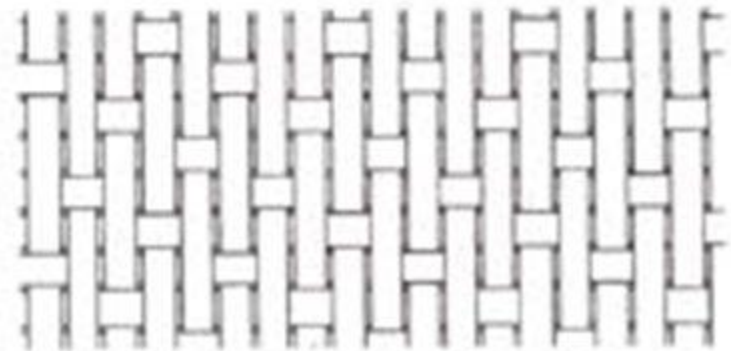
Satin is a fabric that typically has a glossy surface and a dull back, one of three fundamental types of textile weaves along with plain weave and twill. The satin weave is characterized by four or more fill or weft yarns floating over a warp yarn, four warp yarns floating over a single weft yarn.

Satin fabrics



# Satin

- **METHOD OF CONSTRUCTION:** Floats one warp yarn over four or more weft yarns, then tied down with one thread, resulting in a smooth face
- **COMMON FABRICS:** satin, satin-weave fabrics out of fabrics such as cotton. Creates a permanent luster opposed to a finish on a fabric (satin-weave cotton versus polished cotton)
- **HOUSEHOLD USES:** draperies, quilts





# *How is Satin weave made?*

It Is A Type Of Weave With A Complex Structure. Made By Floating Several Warp Yarns Across The Weft Before Going Under 1 Weft Thread, And Beginning The Cycle Again. Having Fewer Interlaces Leads To The Smooth, Lustrous Surface We All Know And Love.

# *Difference between Satin or Sateen weave*

**Satin Weave**

**Sateen Weave**

X	X		X	X
X	X	X	X	
X		X	X	X
X	X	X		X
	X	X	X	X

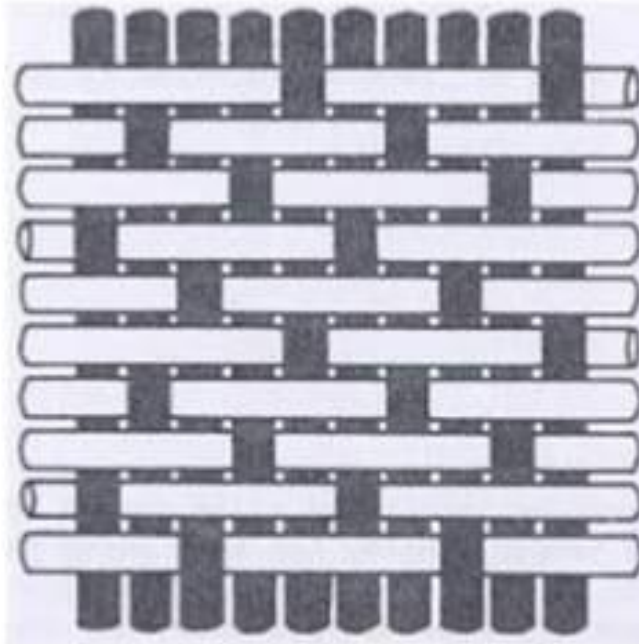
		X		
				X
	X			
			X	
X				

5 end satin with  
move number 2

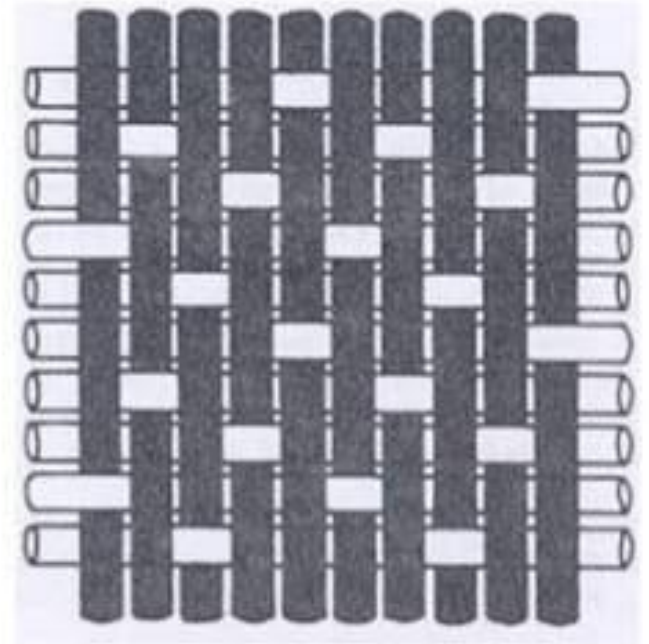
5 end sateen with  
move number 2

$$\frac{4}{1} \text{ (2) Satin}$$

$$\frac{1}{4} \text{ (2) Sateen}$$



SATEEN

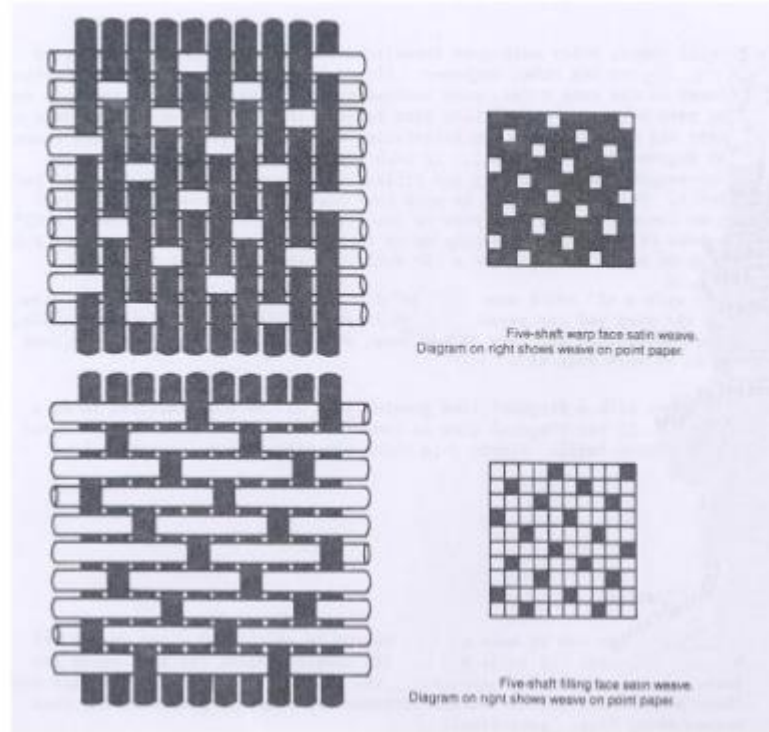


SATIN

## Satin & sateen Weave

The term satin is used for warp face structure and sateen is used for weft face structure. In pure sateen and satin weaves there is one interlacing for each warp yarn and only one interlacing for each weft yarn in each repeat of the weave.

This will result in production of fabrics with a maximum degree of smoothness and luster and without any prominent weave effect.



# THANK YOU