



Description : A skirt which incorporates triangular inserts (called "godets") between seams near the bottom hem, introducing a strong bell-like flare. Godets tend to influence and enhance the movement of the skirt.

Parts : Multiple skirt gores (panels), godet insets, waistband

Preferred fabrics : Obviously, a skirt with a godet will use more material than it would otherwise. For this reason, lightweight fabrics are often used to make godets, so that the skirt will not be weighed down. Cotton, silk and linen are popular choices, since these fabrics are also appropriate for rippling summery skirts. Heavier fabrics like tweed and woolens can use godets, of course, but the skirt will not flow as much.

Godet Variations

Godets may be curved, squared, or pointed as a half circle, a three-quarter circle, or a full circle. Use general instructions and illustrations as a guide for developing godet variations. See pages 236 and 237 for waistband and zipper instructions.

Pattern Plot and Manipulation

- Plot pattern for cut-out design.
- Cut from paper.
- Use cut-out section for spreading.
- Draw slash lines.
- Cut slash lines to, not through, the top of the section.
- Spread for flare. Retrace.

Design 1

- See Figures 1, 2, and 3.

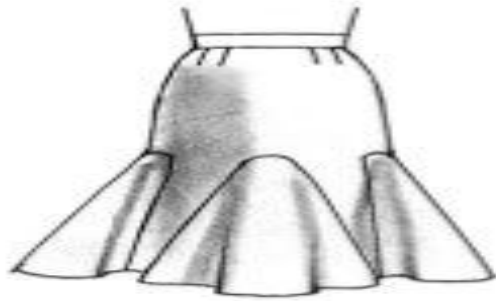


Figure 1

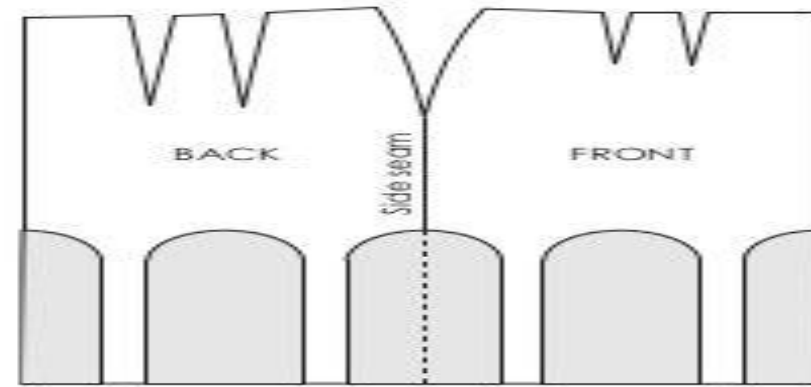


Figure 2

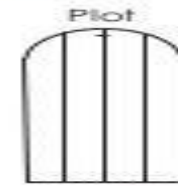
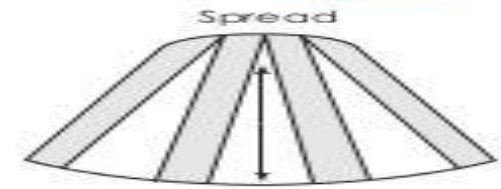


Figure 3



Design 2

- See Figures 1, 2, and 3.



Figure 1

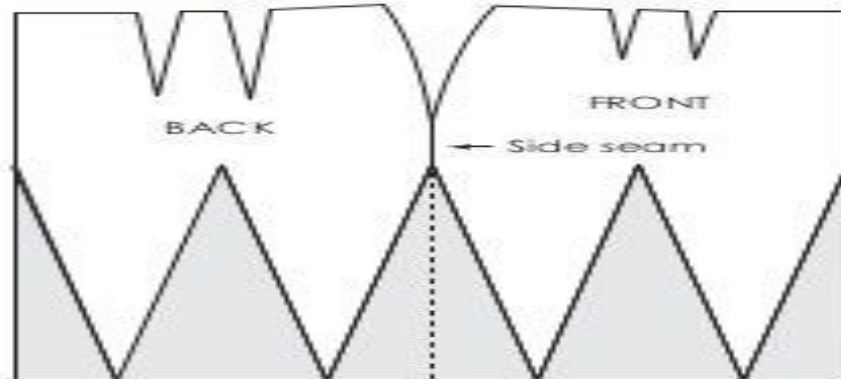


Figure 2

Plot

Cut-out section

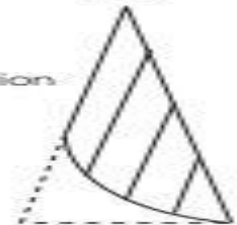
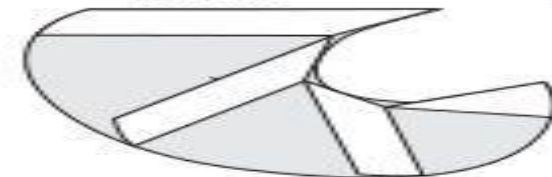
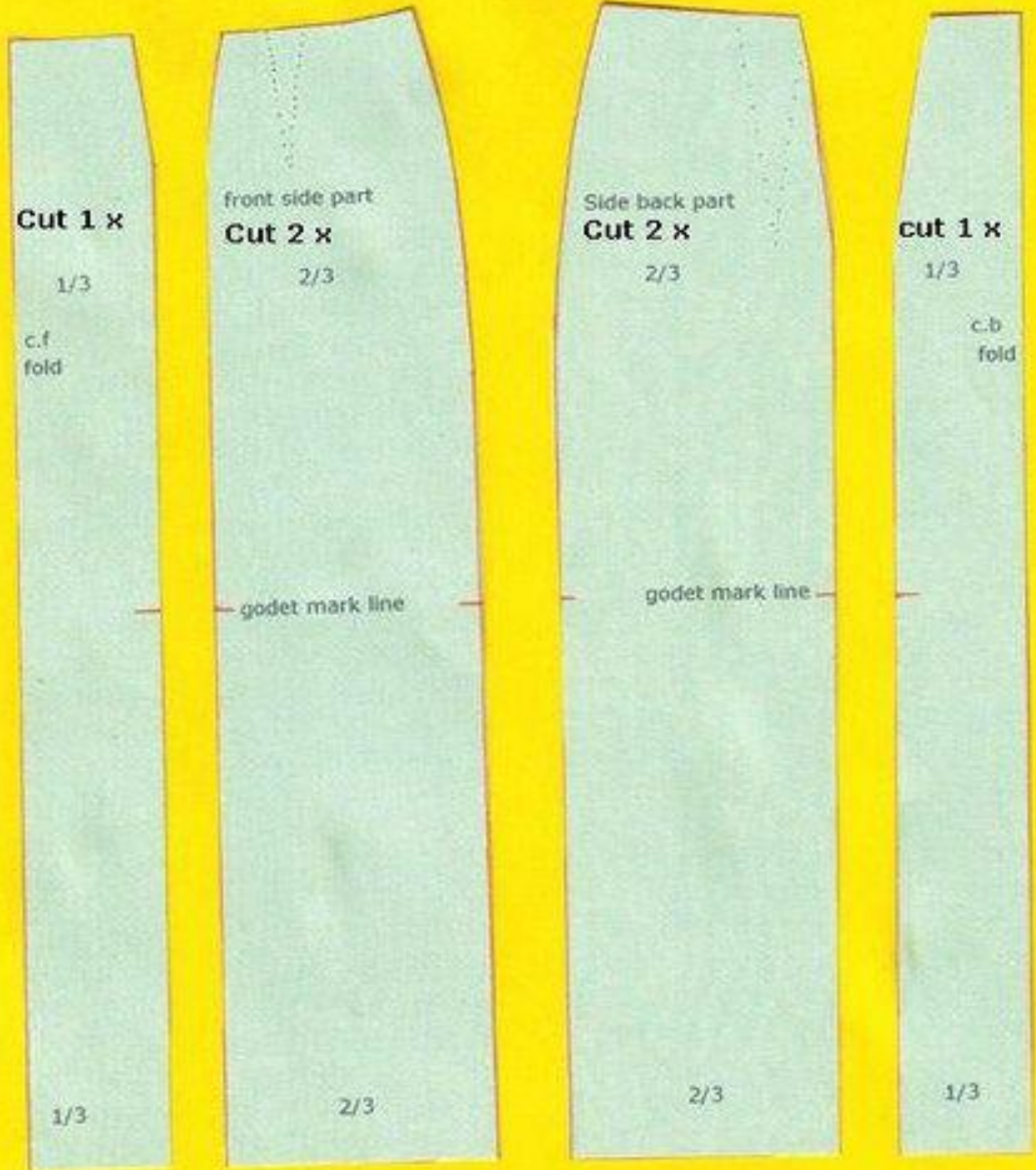
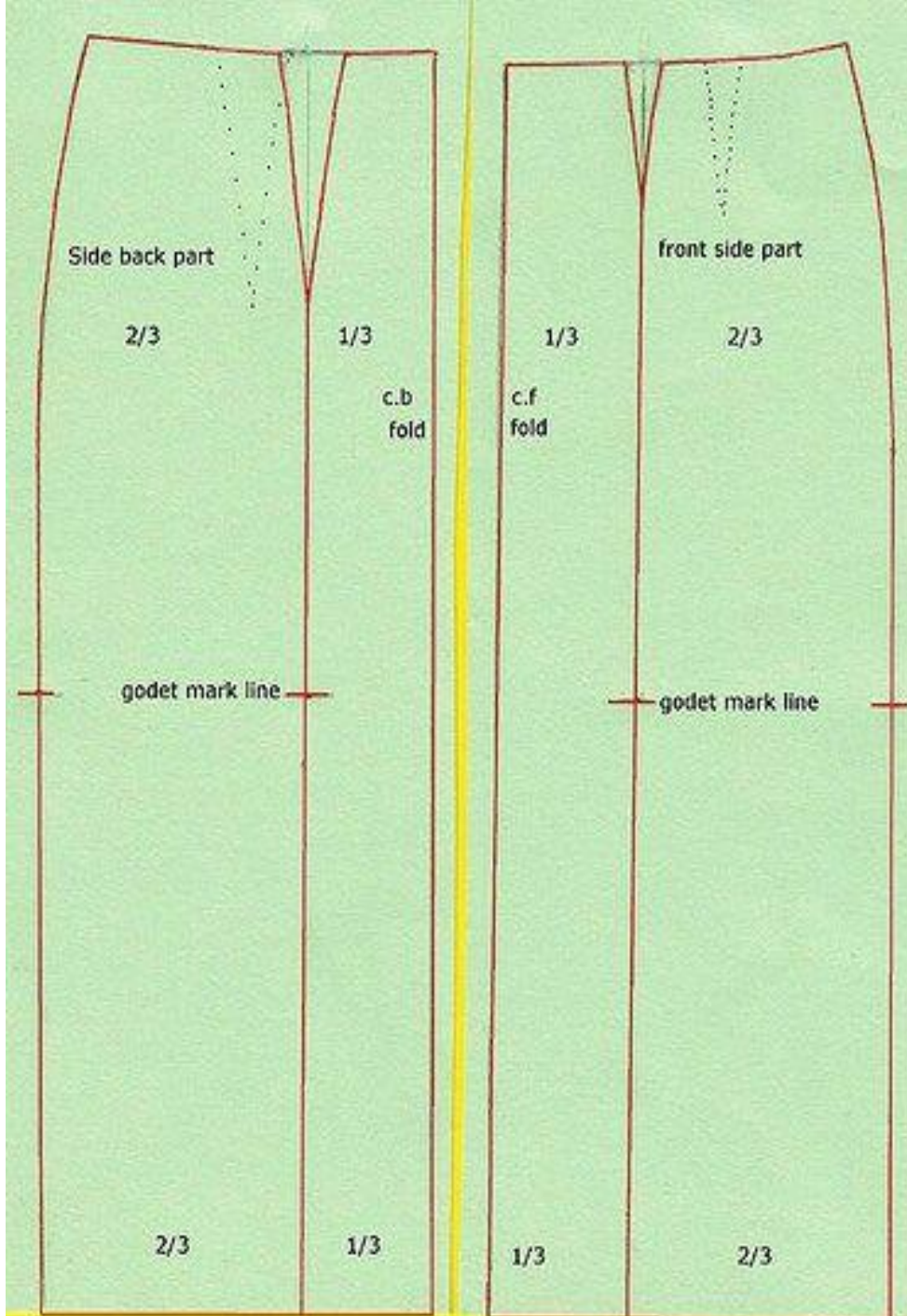


Figure 3

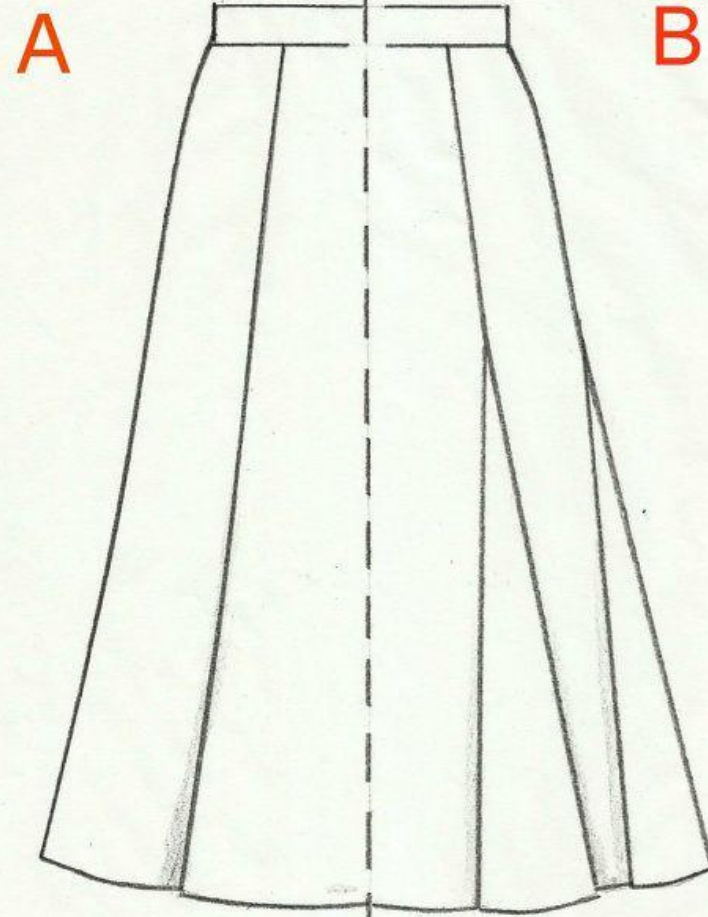
Spread







Eight Gore Skirt



A.- Eight Gore Skirt.

B.- Eight Gore Skirt with 8 Godets.