
LESSON 1 CORELDRAW: AN INTRODUCTION

STRUCTURE

- 1.0 OBJECTIVES**
- 1.1 INTRODUCTION TO CAD/CATD**
- 1.2 IMPORTANT GRAPHICS PROGRAMS**
- 1.3 GETTING STARTED WITH CORELDRAW**
 - 1.3.1 OPENING CORELDRAW
 - 1.3.2 CORELDRAW APPLICATION WINDOW
 - 1.3.3 WINDOW COMPONENTS
- 1.4 TOOLS OVERVIEW**
- 1.5 ASSIGNMENTS**
 - 1.5.1 CLASS ASSIGNMENTS
 - 1.5.2 HOME ASSIGNMENTS
- 1.6 SUMMING UP**
- 1.7 POSSIBLE ANSWERS TO SELF-CHECK QUESTIONS**
- 1.8 TERMINAL QUESTIONS**
- 1.9 REFERENCES**
- 1.10 SUGGESTED FURTHER READING**
- 1.11 GLOSSARY**

1. CORELDRAW: AN INTRODUCTION

Today, computers have become an integral part of life. No wonder, they are used for designing.

In this lesson, the important graphics programs will first be listed and then one of these, viz. CorelDraw will be described. The tools used in CorelDraw will then be discussed. In view of the important place that CorelDraw has in textile designing, this whole course of fifteen lessons will be devoted to a detailed understanding of this very versatile designing tool.

1.0 Objectives

After going through this lesson, you will be able to

- Understand various graphics software.
- Use various menu bars and graphic tools of CorelDraw.
- Use various text tools and docker tools in CorelDraw.

1.1 Introduction

A person who was good at performing numerical calculations was called a human computer much before computers came into being. The use of mechanical calculating devices made his task less demanding. The use of punched paper cards to run jacquard looms came up around 1800. The development of transistors followed by microprocessors based on integrated circuits led to the size of the computers becoming smaller and its price also came down.

Designing with computers is called computer aided designing (CAD) and textile designing with computers is called computer aided textile designing (CATD).

Designing with computers offers so many advantages that engineers, technologists, professionals and so many others make use of them in their everyday work. Some of the major advantages are:

- We can save a lot of time and labour.
- We can make designs with very great accuracy.

- We can make a number of colour combinations of one design in a very short-time period.
- We can make very complicated designs with different texture and colour effect very easily.

1.2 Important Graphics Programs

Some of the important graphics programs, which are used by designers, are given below:

- CorelDraw
- Corel Photo-paint
- Adobe Photoshop
- Adobe Illustrator
- Macromedia Freehand
- Macromedia Fireworks
- L-View
- U-Lead

In this course, we will study CorelDraw.

1.3 Getting Started with CorelDraw

CorelDraw is one of the most popular and powerful graphics programs and gives designers a most rewarding and enjoyable work experience. It is built and designed to meet the day-to-day demands of working designers.

CorelDraw software is available in the market and once loaded onto the computer, you can get started with your designing work.

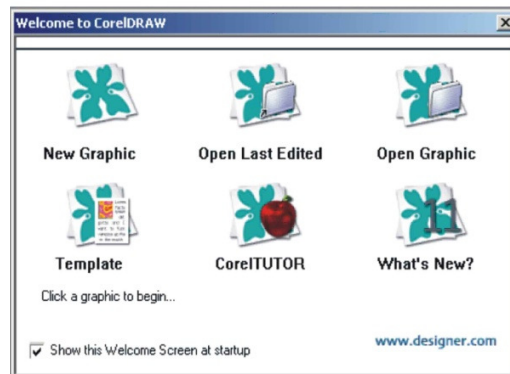
1.3.1 Opening CorelDraw

- Switch on the computer and take the following steps:
- Go to Start and select Programs from the list. (The welcome screen at start-up is shown in the next figure).
- Find the Corel section and select CorelDraw.
- Choose Open Graphic for old design. New Graphic creates a new, one page document. Template allows access to professionally created templates from the library. Corel Tutor gives a brief overview of how to use the program.

- 'What's New?' shows improvements over the earlier Version. Designer.com connects you to a web site where you can find many helpful areas.

1.3.2 CorelDraw application window

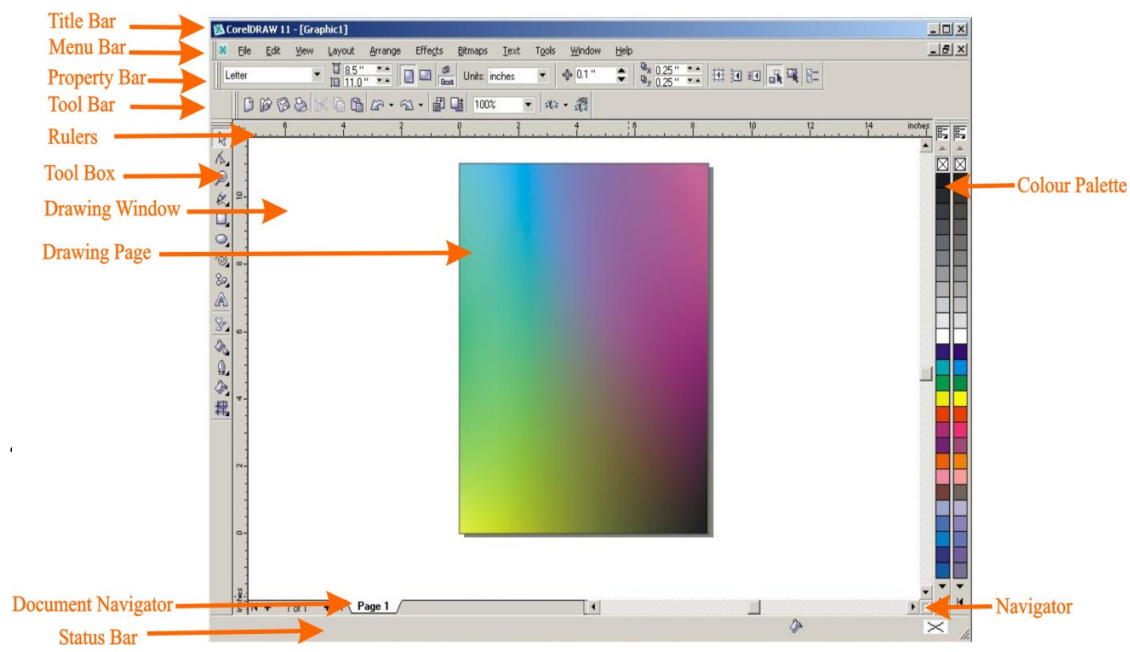
The CorelDraw application window looks like the one illustrated here.



1.3.3 Window components

The various window components in CorelDraw are:

- Title bar
- Menu bar
- Property bar
- Tool bar (Standard)
- Tool box
- Rulers
- Drawing page
- Drawing window
- Colour palette
- Docker
- Status bar
- Document navigator
- Navigator
-



These components and options will be known while working.

1.4 Tools Overview

The Toolbox is located in the left portion of the window and contains all the drawing and editing tools necessary to create objects for an illustration. Tools containing a small triangle in the corner produce a Flyout. These are described as:



- Pick Tool Selects objects. Once selected, you can use the Pick Tool for move, stretch, scale, rotate, and skew objects.



- Shape Tool Reshapes objects by moving nodes, lines, and control points.



- Zoom Tool changes the current view of the drawing.



- Freehand Tool draws lines and curves. You can also use this tool to trace bitmaps.

Activity 1: Draw a flower with eight petals by using free hand tool shape tool. Draw a square by using pen tool. Place this flower inside square with the help of pick tool. Now fill the colours in flower and square.



and the



- Smart Drawing Tool converts the freehand strokes you draw to basic shapes and smoothed curves.



- Rectangle Tool draws rectangles and squares. Squares are created by using the Control key while drawing.



- Ellipse Tool draws ellipses and circles. Circles are created by holding down the Control key as you draw.

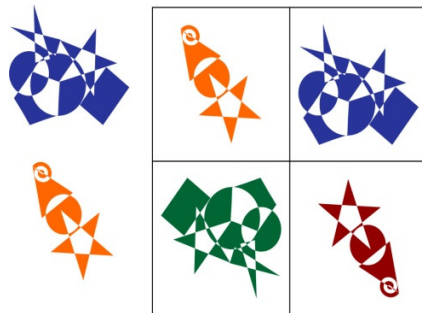


- Graph Paper Tool draws a collection of boxes that simulate a sheet of graph paper.



- Perfect Shapes Tool - A collection of objects, which you can add to your drawing.

Activity 2: Make two compositions by using the following shapes - rectangle, circle, polygon, spiral, star, and triangle.



- Text Tool - Adds either Artistic or Paragraph text to your drawing.
- Interactive Blend Tool - Allows you to merge objects.
- Eyedropper Tool - Allows you to select a color within an object, especially a bitmap, and allows you to apply that color to another object.
- Outlines Tool - Sets the outline style of an object or a line. This includes the line type, ends, color, and weight.



Note: The fly out tools of all the main tools helps us in creating intricate designs more easily, and makes the task easy.

Activity 3: Make two or three different shapes or write some text and try to use the following tools in that drawing.

- Interactive Blend tool



- Interactive Contour tool



- Interactive Transparency tool



- Interactive Drop shadow tool

COREL DRAW 12



- Fill Tool - Assigns the fill style of any object.



- Interactive Fill Tool - Allows you to apply Fountain fills (gradients) using the mouse. The flyout gives access to the Mesh fill Tool.

Activity 4: Make a floral pattern for table cloth by using the following tools:

1. Freehand tool
2. Shape Tool
3. Outline Tool
4. Transparency Tool
5. Fountain Fill Dialog Box
6. Interactive Mesh Fill Tool



Self-check Questions

1. What are various menu bars in CorelDraw?
 2. What are different tools in CorelDraw?
 3. What are fill tools?
 4. Write the name of various fill tools.
-

1.5 Assignments

1.5.1 Class assignments

- i) Create a design using free hand tool and its flyouts.
- ii) Apply some effects to the design created, using interactive blend tool.

1.5.2 Home assignment

- i) Create a pattern design using duplicating technique and apply some effects using artistic media tool.

1.6 Summing Up

In this lesson we learnt about the basic operations and features in CorelDraw. To begin with we studied about opening CorelDraw followed by CorelDraw application window, brief description of window components and about various tools used while working with CorelDraw.

1.7 Possible Answers to Self-check Questions

1.
 - a. Standard toolbar
 - b. Property bar
 - c. Main tool box
 - d. Rulers
 - e. Colour palette
 - f. Status bar
 - g. Page navigator

- h. Docker tabs
- 2.
 - a. Pick tool
 - b. Shape tool
 - c. Rectangle tool
 - d. Zoom tool
 - e. Freehand tool
 - f. Ellipse tool
- 3. Assigns the colour fill style of any object.
- 4.
 - a. Fountain fill
 - b. Pattern fill
 - c. Transform fill
 - d. Texture fill

1.8 Terminal Questions

1. What are the major components of CorelDraw application window?
2. Discuss the toolbox of CorelDraw.
3. Describe in brief, the contents of menu bar.

1.9 References

1. CorelDraw Graphics Suite 12, User guide.

1.10 Suggested Further Reading

1. <http://www.corel.com>

1.11 Glossary

1. Jacquard A loom with an attachment for forming openings for the passage of the shuttle between the warp threads
2. Mesh An interconnected or intersecting configuration or system of components

