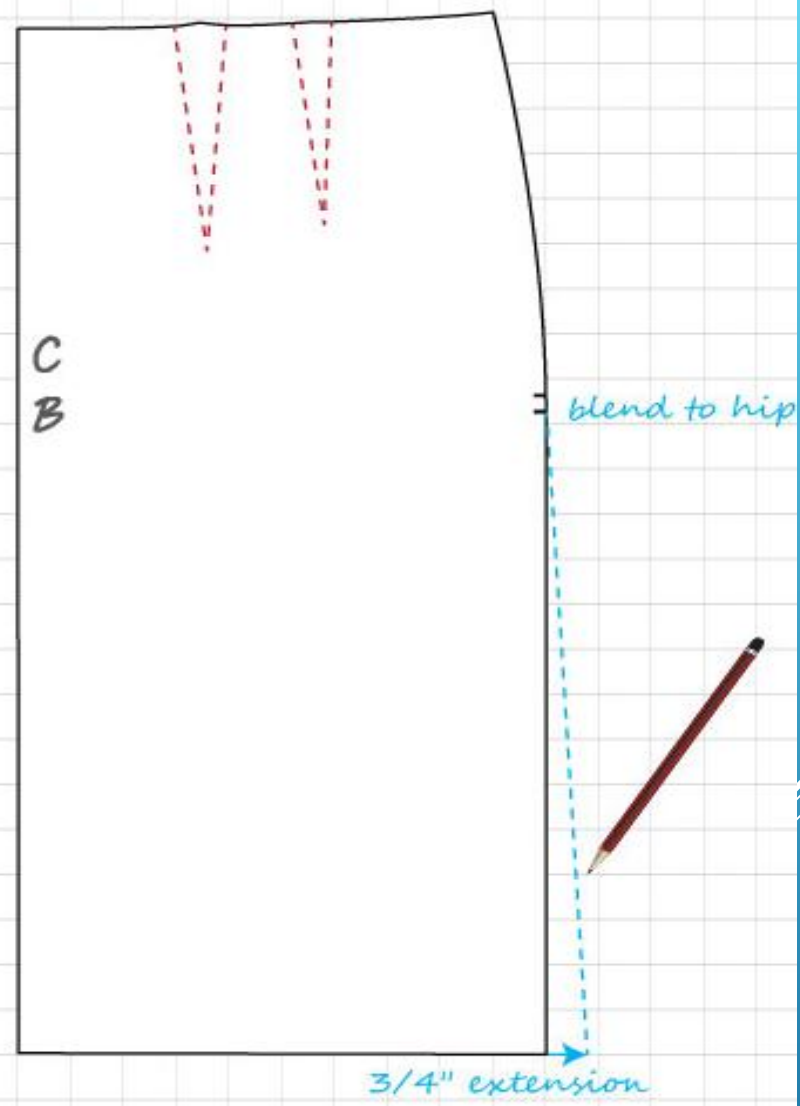
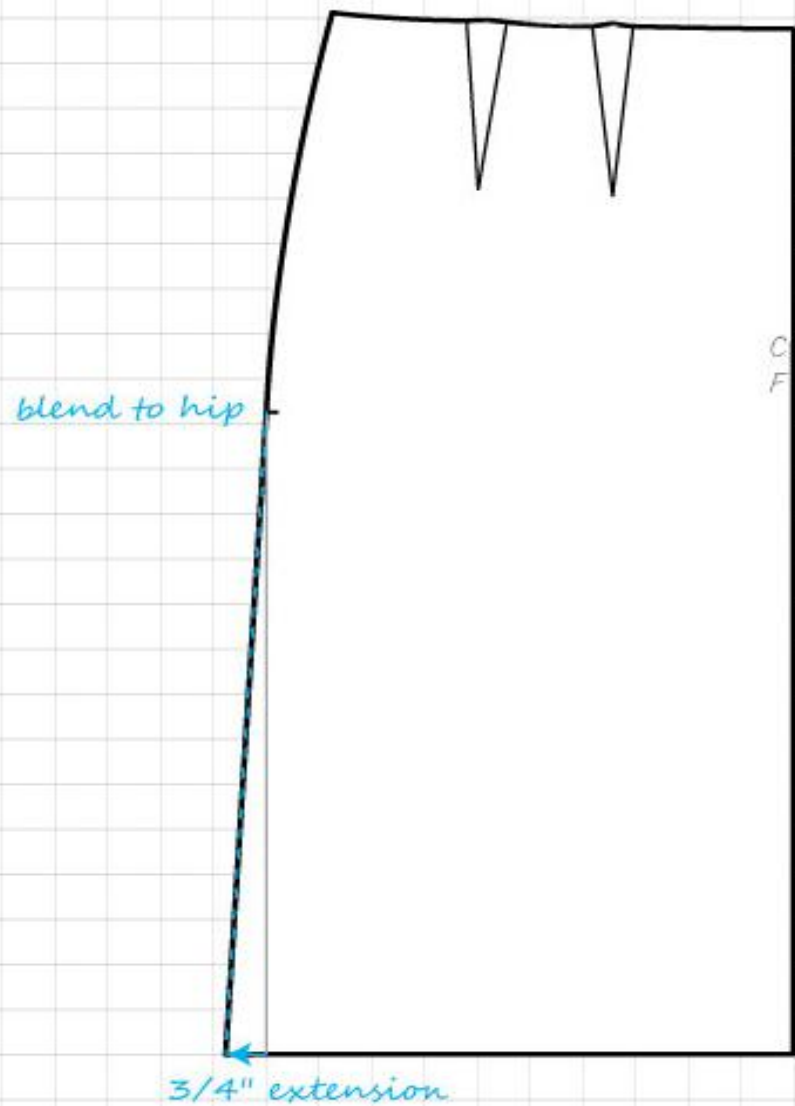




Pleated Skirt

draw darts (F&B)

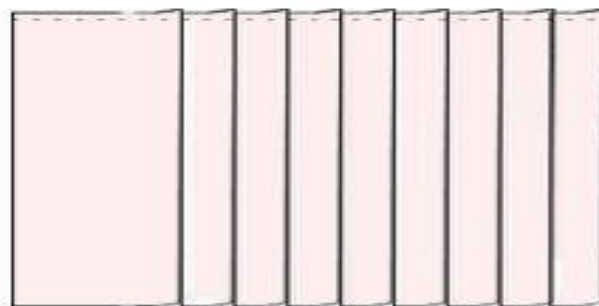
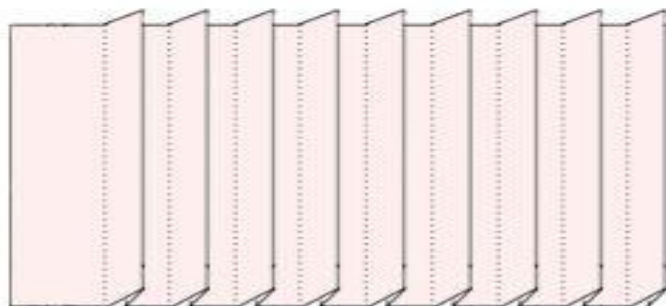


① MEASURE OUT YOUR RECTANGLE PIECE TO BE PLEATED - USE EQUATION BELOW

WAIST MEASUREMENT /
9 OR 10 (PLEATS)
= THE WIDTH OF THE VISIBLE
PART OF THE PLEATS

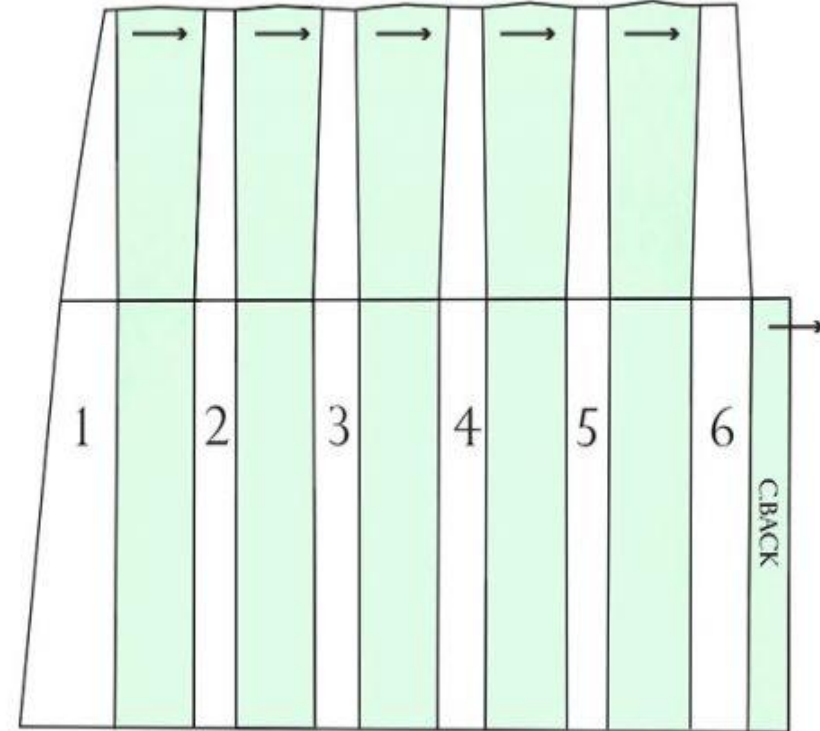
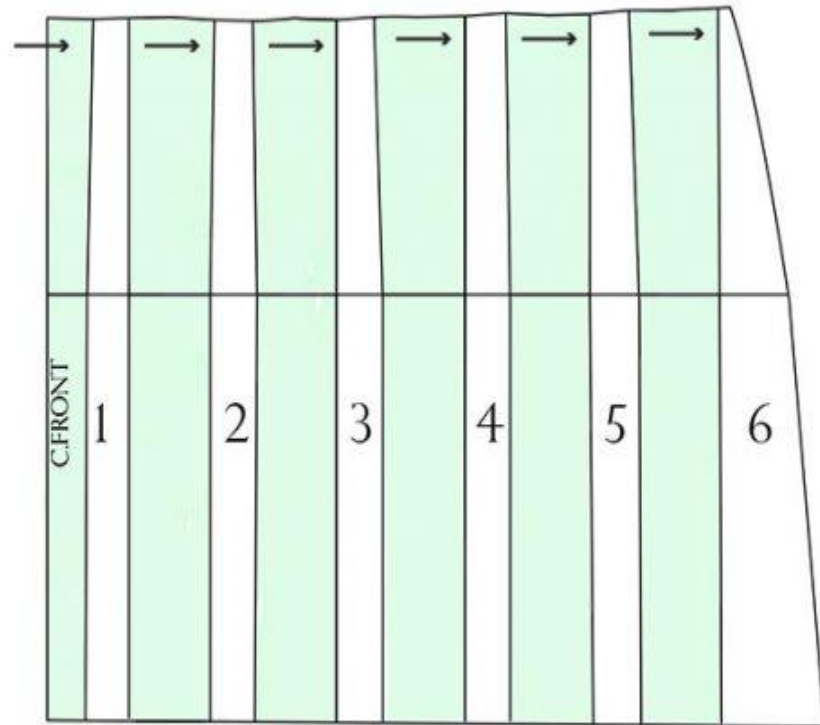
WIDTH OF THE VISIBLE PLEATS X3
(WHICH GIVES YOU THE ENTIRE
PLEAT LENGTH IF UNFOLDED) THEN
X 9 OR 10 (TOTAL PLEATS)
= LENGTH OF PIECE OF RECTANGLE

+12 INCHES (9" INCHES FOR THE
UNDER/INNER PART OF THE WRAP
3 TO 4" FOR THE EDGE
OF THE FRONT PART OF THE
WRAP TO COMPLETE THE PLEAT
FOR A NICE EDGE)

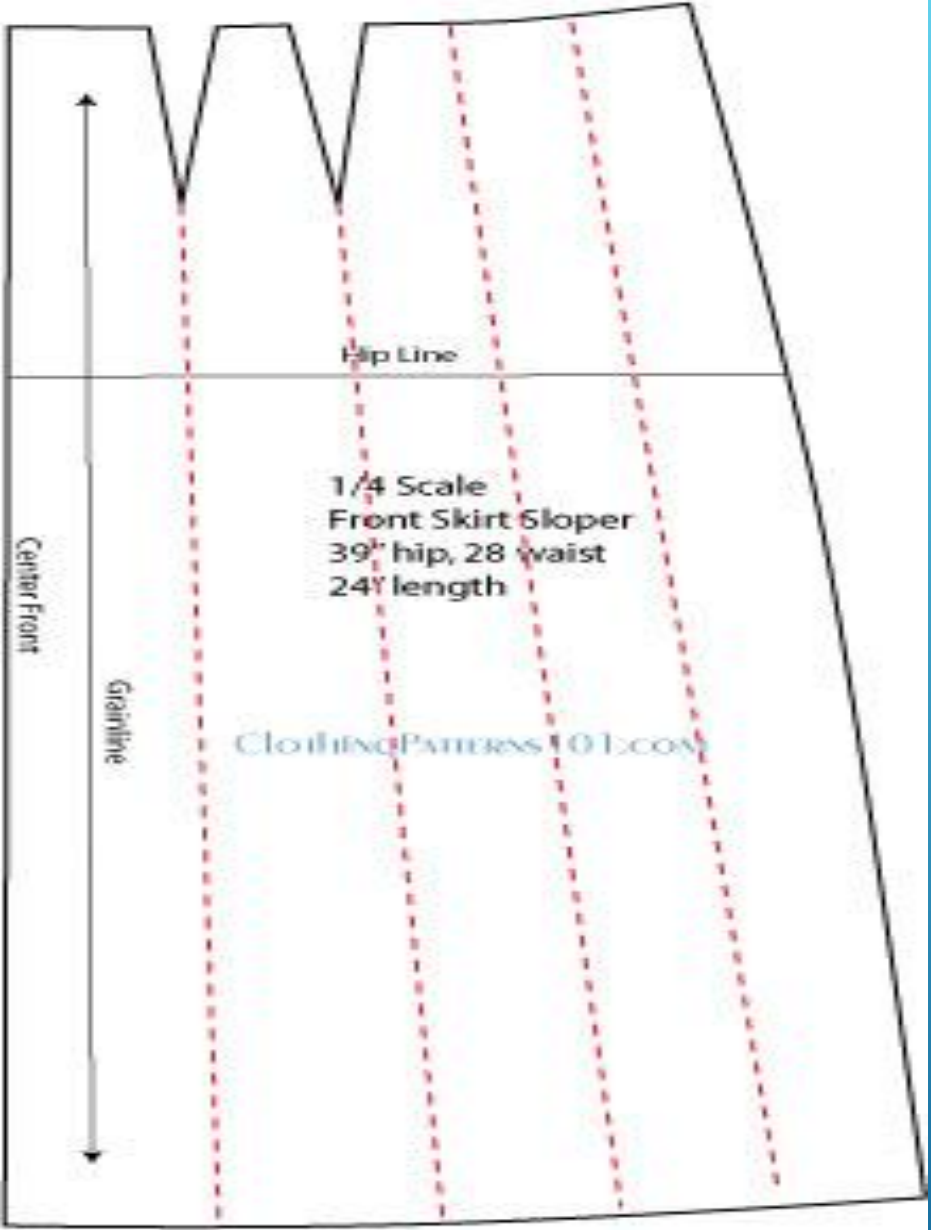


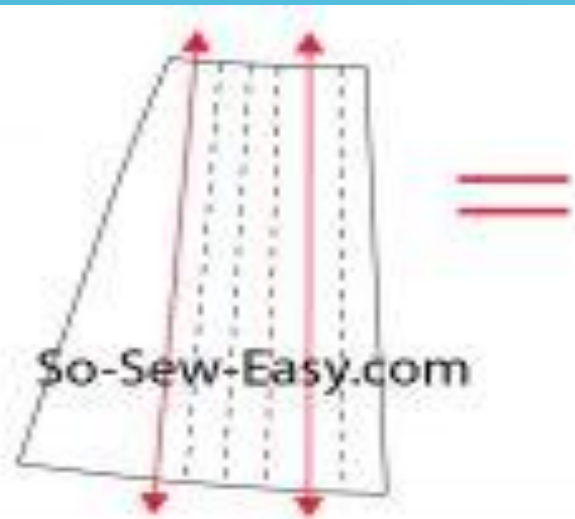
③ SEW ALONG THE
TOP OF THE PLEATS
TO KEEP THEM IN
PLACE.

② PLEAT BY FOLDING OVER PIECES OF FABRIC INTO EQUAL AMOUNT OF PLEATS, EQUALLY THE SAME WIDTH
ALSO MAKING SURE THE INDIVIDUAL PLEATS ARE AS WELL EQUALLY FOLDED INTO 3RDS, FOLLOWING THE
MEASUREMENTS YOU CALCULATED FROM ABOVE.

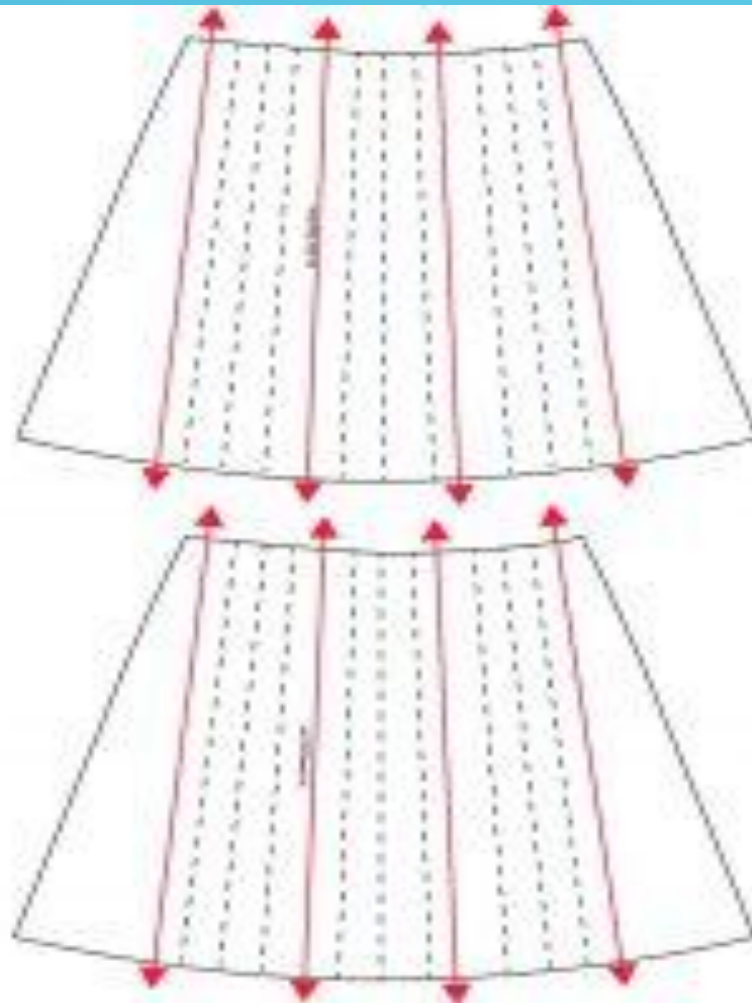


www.theshapesoffabric.com





=



Divide the amount
by 8