



# INDUSTRIAL PAPER PATTERN

## TROUSER

BY – MRS. NAVNEETA

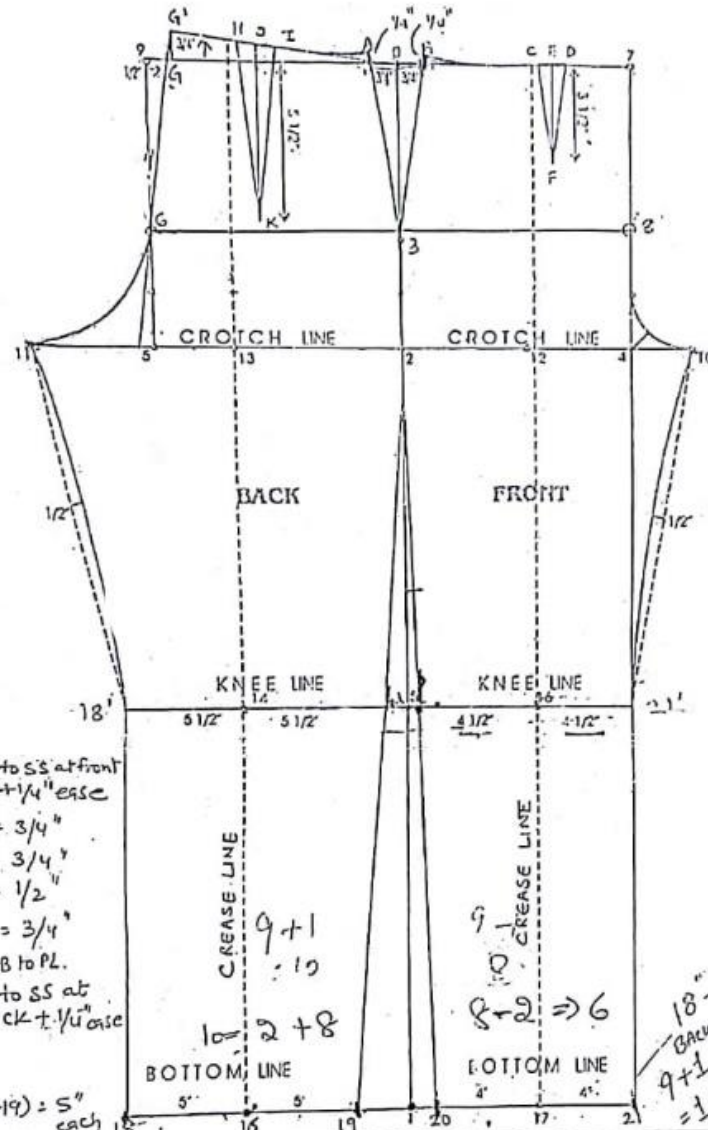
ASST. PROF IN FD

# TROUSER



Is a piece of clothing that covers the lower part of the body from the waist to the feet, consisting of two cylinder-shaped parts, one for each leg, that are joined at the top.

# PATTERN MAKING OF TROUSER



PL to SS at front  
+ 1/4" ease  
 $O - N = 3/4"$   
 $C - R = 3/4"$   
 $H - G = 1/2"$   
 $G - G' = 3/4"$   
 $G' H = CB to PL.$   
 $A I = PL to SS at$   
 Back + 1/4" ease

$6 - 13 (16 - 19) = 5"$   
 each  
 $7 - 20 (17 - 21)$   
 = 1" each  
 $F =$  front dart  
 = 3 1/2"  
 $K =$  back dart  
 = 5 1/2"

0-1 = TROUSER LENGTH  
 0-2 = CROTCH DEPTH + 1 1/2"  
 2-3 = 1/3 OF 0-2  
 2-4 = FRONT HIP  
 2-5 BACK HIP  
 SQUARE UP TO 6, 7, 8 AND 9  
 $4-10 = 1/2$  OF 2 TO 4  
 $5-11 = 1/2$  OF 2 TO 5

12 IS THE MID POINT 2 TO 10 SQUARE DOWN  
 13 IS THE MIDPOINT OF 2 TO 11 SQUARE DOWN  
 15 IS 1/2 OF 1 TO 2 MINUS 1" IS KNEE LEVEL  
 FROM 16  
 ROUND BOTTOM  
 FRONT = 1/2 ROUND BOTTOM + 1/2  
 BACK = 1/2 ROUND BOTTOM + 1/2

18" Round  
 BACK - 9-1  
 $9+1 = 10$   
 $10 - 8 = 2$   
 $2 + 4 = 6$

# PATTERN PIECES OF TROUSER

Once your pattern is made cut out the pattern pieces

And trace them on butter paper.

Mark all the seam allowances as mentioned

With Red colour

Mark stitching line 1 mm away from the pattern pieces

In blue colour

# FOR INDUSTRIAL PAPER PATTERN

## Seam Allowances

In leg Seam -  $1/2$  inch

Side seam -  $1/2$  inch

Waist line -  $1/2$  inch

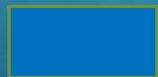
Crotch -  $1/2$  inch

Hem line -  $3 1/2$  inch

## Reference Box



Pattern line



Stitching line



Cutting line

