



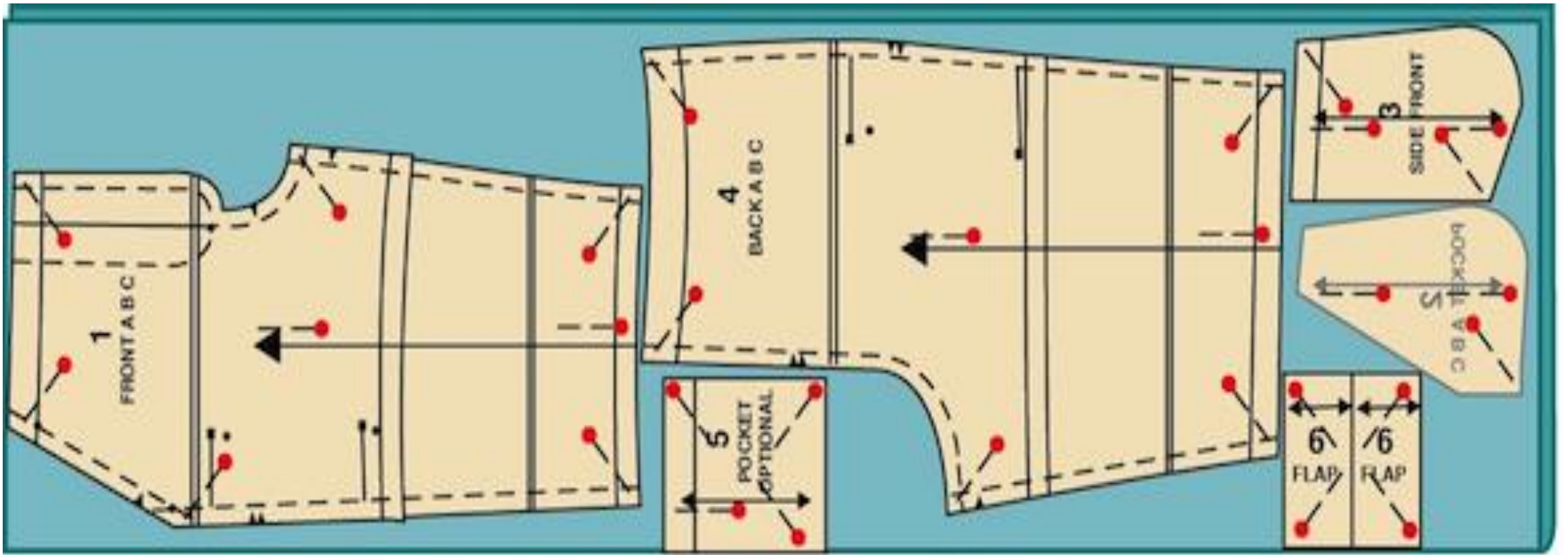
# Layout

FOR  
B.S.C. SEM.VI

SUBJECT-PATTERN MAKING AND CONSTRUCTION

FROM  
MISS HARPREET KAUR

ASST. PROFESSOR IN FASHION DESIGNING



---

# LAYOUTS

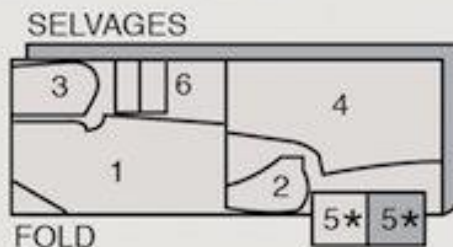
## SHORTS B / SHORT B

use pieces/use piezas: 1, 2, 3, 4, 5, 6

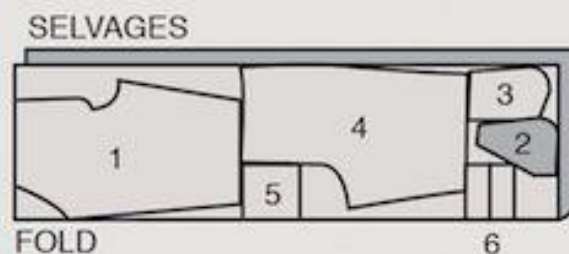
**Note:** Shorts can be made with or without patch pockets and flaps. If making shorts without patch pockets and flaps, eliminate pieces 5 & 6 and interfacing.

**Nota:** El short se puede hacer con o sin bolsillos de parche y caderas de bolsillo. Si has el short sin bolsillos de parche y cadera de bolsillo, eliminar las piezas 5 & 6 y la entretela termoadhesiva.

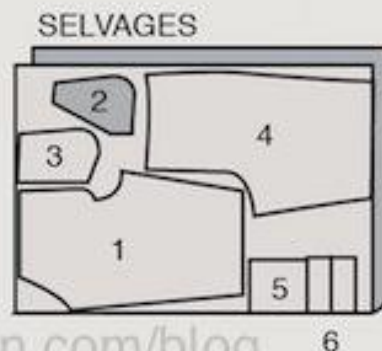
45" (115 cm)  
with or without nap  
con o sin pelillo  
sizes/tallas XS/XP-S/P



45" (115 cm)  
with or without nap  
con o sin pelillo  
sizes/tallas M/M-L/G-  
XL/XG



60" (150 cm)  
with or without nap  
con o sin pelillo  
sizes/talla XS/XP-S/P-M/M



## Cutting Layouts



pattern printed  
side down



pattern printed  
side up



See  
SPECIAL  
CUTTING  
NOTES

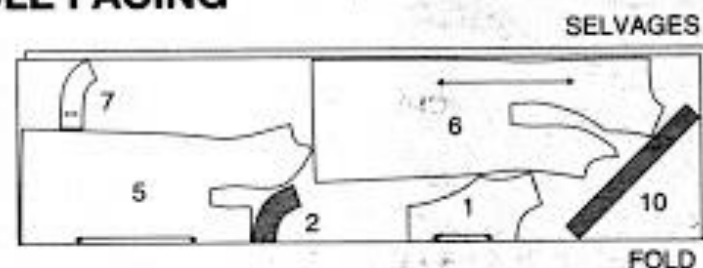
POSITION OF PATTERN PIECES MAY VARY SLIGHTLY ACCORDING  
TO YOUR PATTERN SIZE

**NOTE:** FOR DRESS WITH OVERLAY OMIT PIECES 2 4 7 10

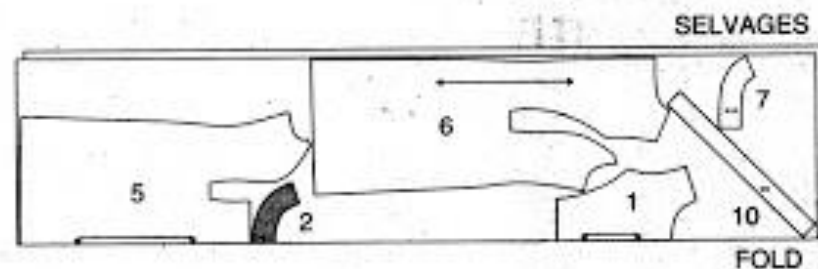
## DRESS WITH A BODICE FRONT - INCLUDING ARMHOLE FACING

USE PIECES 1 2 5 6 7 10

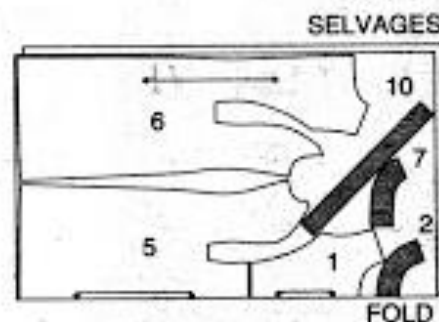
44" 45" (115CM)  
WITH NAP  
SIZES 4 6 8 10 12 14



44" 45" (115CM)  
WITH NAP  
SIZES 16 18 20



58" 60" (150CM)  
WITH NAP  
SIZES 4 6 8 10 12 14



**DOTS** (large and small), squares, or triangles found along the seamlines indicate areas of construction where precise matching, clipping, or stitching is essential.

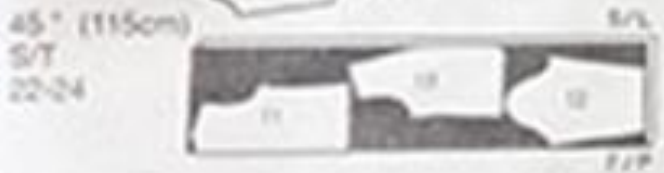
**FOLDLINE.** Often indicated by a long bracket with arrows at each end, it may have "place on fold" instructions. Place the pattern piece with the fold-line exactly on the fold of the fabric.

**GRAINLINE.** Heavy solid line with arrows at each end. Place the pattern piece on the fabric with the grainline running parallel to the selvage.

**ADJUSTMENT LINE.** Double line indicating where the pattern can be lengthened or shortened before cutting out the fabric. If an alteration is necessary, cut the pattern on the double line; spread evenly to lengthen, or overlap evenly to shorten.



## JACKET PIECES: 10,11 & 12

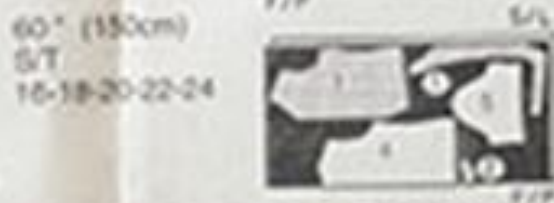
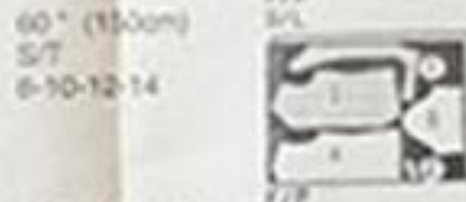
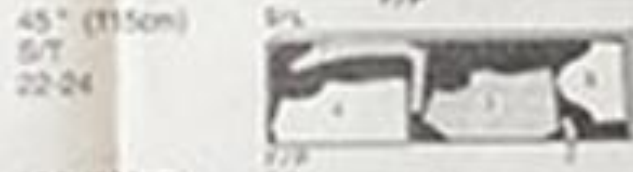


## LINING (Jacket) PIECES: 10,11 & 12

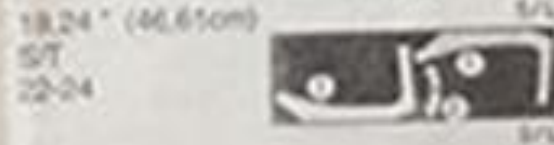
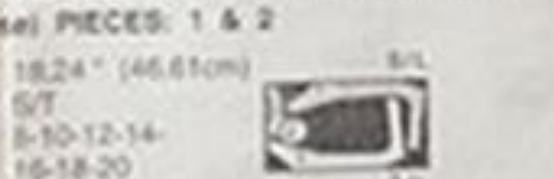
NOTE: Save remaining lining fabric to cover shoulder pads. See Sewing Instructions.



## BLOUSE PIECES: 1,2,3,4 & 5



## FUSIBLE INTERFACING (Blouse) PIECES: 1 & 2



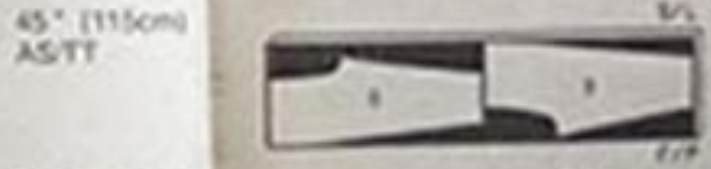
## SKIRT A

PIECES: 6 & 7



60" (150cm)  
AS/TT

## PANTS B PIECES: 8 & 9



Thank you